



# SUBMITTAL SHEET

## Product(s): Trim-Tex Wall Mounted Deflection Bead

**Description:** Trim-Tex Wall Mounted Deflection Beads are designed to attach to your drywall and compress against your concrete deck during deflection to prevent cracks.

**Advantages:** Comes with a full  $\frac{5}{16}$ " tear-off leg that acts as a guide for the taping knife as well as a protective masking for taping and mudding. The flexible gasket compresses during deflection to prevent cracks in the drywall and provides  $\frac{7}{16}$ " of protection. Made from rust proof, dent resistant PVC to reduce jobsite and handling damage. Does not contain cellulose, a potential food source for mold

**Limitations:** Product is designed for interior use. Not designed for major uplifts. Small gaps caused by minor uplift can be easily caulked.

**Applicable Standards:** Rigid PVC products made by Trim-Tex meet ASTM specifications D3678-97 Class 2, D1784-03, C1047-99 and achieve a Class A rating for flame spread and smoke developed when tested under ASTM E84-10.

**Surface Characteristics:** Trim-Tex products are made from PVC. PVC does not support combustion and is self extinguishing when the source of flame or heat is removed.

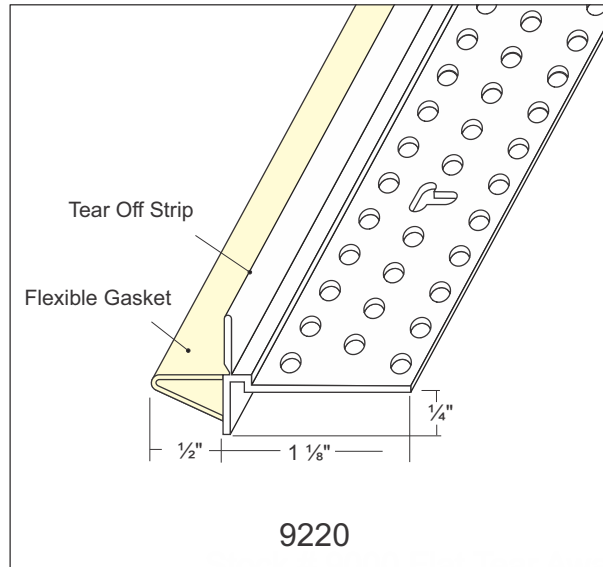
**Installation:** Leave a  $\frac{1}{2}$ " gap between the edge of the drywall and the concrete deck. Snip the bead to length and dry fit. Install with Trim-Tex 847 Spray Adhesive and  $\frac{1}{2}$ " divergent staples. Detailed installations instructions are included with each product.

**Finishing:** Once mudding is complete, remove tear-off leg for a clean, sharp look. Always use a high quality paint.

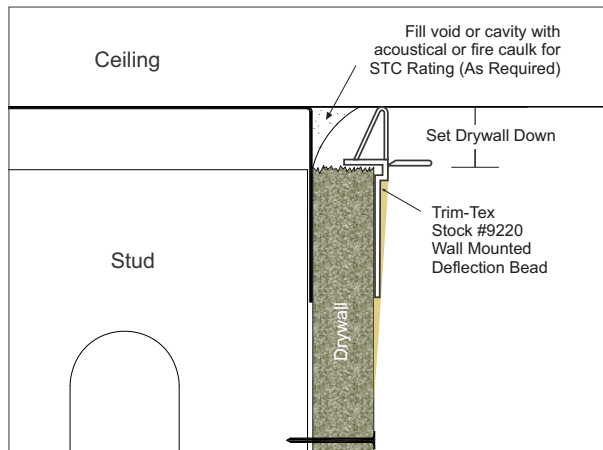
**Accessories:** 847 Spray Adhesive, Staple Guns and Divergent Staples, Trim-Tex Sanding Blocks & Abrasive Products, Mud-Max Drywall Compound Additive, North by Honeywell - Safety Products distributed by Trim-Tex.

Job Name \_\_\_\_\_

Contractor \_\_\_\_\_ Date \_\_\_\_\_



STOCK NUMBER	LENGTH	PCS PER BOX
9220	10'	21



Approvals (Signatures or Stamps)