

CertainTeed
SAINT-GOBAIN



silentFX®
QuickCut™

Noise-Reducing
Drywall

Hear Is What Matters

Acoustics is the scientific study of sound. The majority of architectural acoustic situations consist of a source, a path and a receiver. The source can be the neighbors' home theater system, a patient waiting room or the high school band practice room. The receiver can be a person trying to talk on the phone, sitting in an examination room or conducting a class. The sound transmission paths are those building elements through which noise from the source travels to interfere with our daily activities. SilentFX® QuickCut™ Gypsum Board systems address these paths and through proper design and installation contribute to satisfactory sound isolation and privacy.

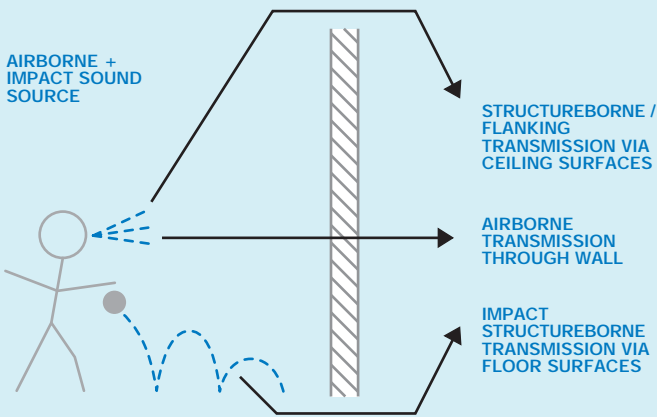
Some key performance characteristics of good acoustic design are to provide mass to the system with the ability to dampen vibrations caused by sound energy striking the system. SilentFX® QuickCut™ Gypsum Board is engineered using the mass of two dense gypsum board layers with an inner layer of viscoelastic polymer that acts much like a shock absorber to dampen board vibrations. This type of "Constrained Layer Damping" board product performs well acoustically over an extended range of frequencies, resulting in increased Sound Transmission Class (STC) ratings for the systems.

DECIBEL (dB)

A measurement of sound intensity or loudness.
The more intense the sound, the higher the dB level.

AIRBORNE VS. STRUCTUREBORNE SOUND

Airborne: Sound transmitted through air.
Structureborne: Sound transmitted through structure of building.

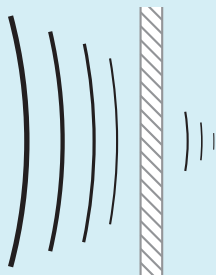


SOURCE ROOM	RECEIVING ROOM	MIN. STC*
SCHOOL Classroom	Adjacent Classroom	
	Speech use only	STC 42
	Speech + Audiovisual	STC 48
	Corridor, public area	STC 42
	Recreational area	STC 52+
DOCTOR'S SUITE Office	Adjacent offices	STC 52
	Corridor, lobby	STC 52
	Mechanical	STC 52+
HOTEL Bedroom	Adjacent bedroom	STC 48+
	Corridor, lobby, public area	STC 48+
	Mechanical	STC 52+
MULTI-FAMILY HOME Bedroom	Adjacent Bedroom	STC 48-55
	Living room, separate occupancy	STC 50-57
	Corridor, lobby, public area	STC 48-55
	Exterior of building	STC 42-60

* Recommended minimum STC

Noise leaks, as the term implies, are the result of situations such as unsealed gaps at wall/wall, wall/floor and wall/ceiling junctures, medicine cabinets installed back to back and electrical outlets on each side of a wall sharing the same stud cavity. Flanking paths are those indirect routes that noise can follow to an adjacent room or dwelling, such as openings under doors, air ducts and floors under a common wall. Reducing or eliminating through-wall penetrations and restricting wall penetrations to one per stud cavity assists in achieving the acoustical performance of the wall system. Such noise problems can be greatly reduced by thoughtful planning in the early stages of the building’s design and close supervision with proper attention to small details during construction.

SOUND TRANSMISSION CLASS (STC) RATING
A single number rating system that represents the sound transmission loss performance of a wall.



AMBIENT NOISE
All sound in a given environment, including sound from outdoors, building services and utilities.

	PERCEPTION OF SOUND PRESSURE	SOUND PRESSURE LEVEL (dB)
PAIN THRESHOLD -----		140 -----
JET TAKE-OFF -----	INTOLERABLE	130 -----
		120 -----
ROCK CONCERT -----		110 -----
	DEAFENING	100 -----
		90 -----
STREET TRAFFIC -----		80 -----
	VERY LOUD	70 -----
PHONE RINGING -----		60 -----
TV / BUSY OFFICE -----		50 -----
	MODERATE	40 -----
NORMAL CONVERSATION -----		30 -----
		20 -----
QUIET ROOM -----	FAINT	10 -----
		0 -----
CALM BREATHING -----		
HEARING THRESHOLD -----		

SilentFX® QuickCut™ Noise-Reducing Gypsum Board

For the best in acoustic management.

CertainTeed's SilentFX® QuickCut™ is a noise-reducing gypsum board specifically designed for systems requiring high STC ratings.

SilentFX® QuickCut™ Noise-Reducing Gypsum Board is specifically designed to reduce airborne sound transmission between two adjoining spaces when used in wall or floor/ceiling assemblies. SilentFX® QuickCut™ features a viscoelastic polymer that installs and finishes like standard drywall, and dampens sound energy. Application of the viscoelastic polymer between two specially formulated dense gypsum cores results in a combination that significantly improves sound attenuation and is ideal for systems requiring high STC performance. Commercial acoustic systems featuring SilentFX® QuickCut™ provide STC ratings of 50 and up. In addition to providing exceptional acoustic performance, this functionally superior board is engineered to score and snap for faster installation and lower labor costs.

SilentFX® QuickCut™ finishes
like standard gypsum board

ENHANCED ACOUSTICAL PERFORMANCE

STC ratings of 50 and greater

ENHANCED FIRE RESISTANCE

Available in 5/8" Type X,
UL/cUL Classified and ULC Listed

MOLD RESISTANCE

Best possible score per
ASTM D3273

ABUSE RESISTANCE

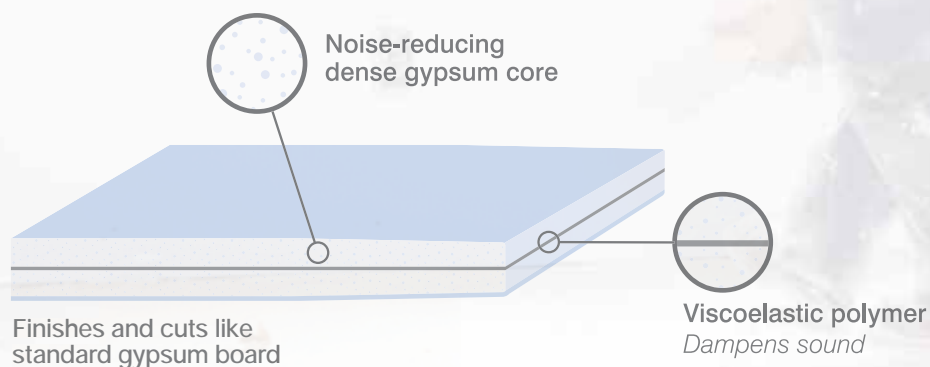
Surface abrasion: 2
Soft body: 1

LOW-EMITTING MATERIAL

GREENGUARD Certified

HIGH-DENSITY CORE

Provides increased mass



M2TECH™

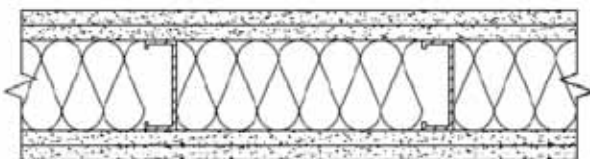
Mold and moisture technology

SilentFX® QuickCut™ is an excellent acoustic solution for meeting Sound Transmission Class (STC) specifications without complex techniques such as isolation clips or resilient channels. It can also help reduce material usage versus traditional gypsum systems that require high sound attenuation.

MORE RELIABLE THAN CLIPS AND CHANNELS

Clips and resilient channel can easily be short-circuited during the construction process and even afterwards, during picture hanging or pressing of heavy objects against the wall, negatively affecting acoustic performance. These risks are eliminated when using SilentFX® QuickCut™, thus providing more consistent acoustic performance. When used in systems with resilient channel, SilentFX® QuickCut™, can reduce the negative effect of short circuits.

DOUBLE LAYER CERTAINTED 5/8" TYPE X



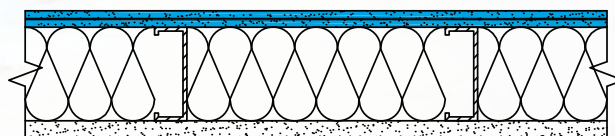
DOUBLE LAYER CERTAINTED 5/8" TYPE X

Thickness: 6-1/8"
Sound test: STC 55

SQUARE-FOOT SAVINGS

The high acoustic performance of SilentFX® QuickCut™ makes it possible to build effective noise-reducing walls with less material, gaining valuable floor square footage, and saving both construction time and material cost. Less material used also means a more sustainable structure in keeping with today's green building practices.

SINGLE LAYER SILENTFX® QUICKCUT™ 5/8" TYPE X



SINGLE LAYER CERTAINTED 5/8" TYPE X

Thickness: 4-7/8"
Sound test: STC 56



silentFX
QuickCut

Rx Symphony® m
Mineral Fiber Ceilings

CertaPro™
Sustainable Insulation®

A quiet place to heal.

Healthcare facilities need to provide an oasis of quiet — conducive to healing. They are also under pressure to reduce costs and be more responsive to patients. In hospitals with reduced noise levels, patient satisfaction with caregiving is increased and sleep is improved. This leads to faster healing, which can mean shorter stays and reduced costs for both patients and hospitals.

BENEFITS FOR HEALTHCARE FACILITIES

Improves patients' sleep and healing time, leading to reduced costs

Increases staff job satisfaction, which can reduce turnover

Helps meet HIPAA acoustic privacy regulations



Symphony® f
Fiberglass Ceilings

Sustainable
Insulation™

silentFX®
QuickCut™

More learning with less distraction.

Learning depends on communication between teachers and students. Excessive noise creates a barrier to learning. Noise such as conversations in hallways, sound systems, students in other classrooms and mechanical equipment can hamper student concentration. Background noise causes teachers to raise their voices, which results in vocal strain over time. SilentFX® QuickCut™ specifically reduces sound transmission from adjacent spaces to make it easier for teachers to be heard and students to learn.



BENEFITS FOR SCHOOLS

Reduces distractions so students can pay closer attention and learn more effectively

Keeps the lines of communication between students and teachers clear and open

Reduces teacher voice strain and increases effectiveness



silentFX®
QuickCut™

NoiseReducer®
Insulation

Get away from it all.

A hotel's most important promise to its guests is privacy and relaxation. Guests who feel relaxed and refreshed are more likely to return and recommend the hotel to others. Yet by nature, hotels are busy, noisy places. People come and go around the clock, vacuums whirr, foot traffic and conversations can be heard up and down hallways. SilentFX® QuickCut™ enhances the guest experience by providing a sound-buffered oasis of comfort amid the hustle and bustle of the busiest hotel.

BENEFITS FOR HOTELS

Helps guests feel relaxed and comfortable so they want to return

Isolates noise from other guest rooms, service corridors and mechanical equipment

Reduces disruptions and distractions in conference rooms and other meeting spaces



CertaPro™
Sustainable Insulation®

silentFX®
QuickCut™

Never hear the neighbors.

In a home, good acoustics are even more important to ensure quality of life. SilentFX® QuickCut™ reduces noise between residential units to increase the sense of separation from neighbors that is necessary for comfort and privacy. SilentFX® QuickCut™ gypsum board systems, with an STC rating of 50 or higher, substantially decrease sound transmitted through walls and improve residents' satisfaction, which leads to less turnover and fewer expenses associated with filling vacancies.

BENEFITS FOR MULTI-FAMILY HOMES

Minimizes neighborhood noise

Increases community harmony

Improves resident satisfaction and peace of mind



Installation and Finishing

INSTALLATION

SilentFX® QuickCut™ Gypsum Board is installed following traditional methods of application and finishing of interior gypsum board products for both walls and ceilings. 1/2" (12.7 mm) SilentFX QuickCut is for use on interior walls in residential, commercial and institutional applications. 5/8" (15.9 mm) SilentFX QuickCut Type X is for use on interior walls and ceilings in residential, commercial and institutional applications.

- Plan SilentFX QuickCut board layout to stagger joints from one side of the wall to the other and stagger between board layers for multi-layered assemblies
- Install batt insulation (CertainTeed's thermal and acoustical fiber glass insulation or equivalent) in cavities
- Use SilentFX Noiseproofing Putty Pads (or equivalent) or acoustical sealant to seal electrical outlet boxes
- Install SilentFX QuickCut in accordance with GA-216, "Application and Finishing of Gypsum Panels" (ASTM C840, CAN/CAS-A82.31)
- Allow a 1/4" (6 mm) gap around all wall perimeter edges
- SilentFX QuickCut boards are cut by scoring from the face side and snapping the same as standard gypsum board
- Seal the 1/4" (6 mm) perimeter gaps and wall penetrations per ASTM C919 with SilentFX Noiseproofing Sealant or equivalent acoustical sealant

FINISHING

SilentFX QuickCut Gypsum Board may be finished, painted or wallpapered using conventional gypsum board finishing techniques. The Gypsum Association GA-214, "Recommended Levels of Gypsum Board Finish" should be referenced when specifying the level of finishing desired.

FIRE-RATED ASSEMBLIES

For the installation of fire-rated assemblies, refer to the appropriate UL/cUL or ULC design in the UL/ULC Fire Resistance Directories for details such as board orientation and fastening schedules.

The UL/ULC Type Designation for 5/8" (15.9 mm) SilentFX QuickCut Type X is **Type SilentFX**.

Building Responsibly

CertainTeed respects the environment through the responsible development of sustainable building products and systems.

The building industry continues to look for ways to reduce impact on the environment while meeting customer demand for products that deliver beauty, comfort and performance.

CertainTeed's commitment to these goals is reflected here, highlighting our ongoing effort to become the preeminent supplier of green building materials.

Awareness of the importance of acoustics in sustainable construction continues to grow, and this is evident with the inclusion of sustainability requirements in many building programs and codes:

- LEED v4
 - EQ Prerequisite 3 - Schools Minimum Acoustic Performance
 - EQ Credit 9 Acoustic Performance
- Green Guide for Health Care
 - EQ Credit 9.1 Acoustic Environment
- 2015 International Green Construction Code (IgCC)
 - Section .3.3 Acoustical Control

Review systems performance information to see how SilentFX® QuickCut™ systems can help contribute to these sustainable programs.



1/2" [12.7 MM] SILENTFX® QUICKCUT™ – WOOD STUD SYSTEMS

A 2"x4" [38x89 mm] wood studs 16" [406 mm] o.c.

ONE SIDE

B 1/2" [12.7 mm] SilentFX® QuickCut™ applied with 1-1/4" [32 mm] type W screws 16" [406 mm] o.c.

OPPOSITE SIDE

C 1/2" [12.7 mm] CertainTeed Easi-Lite® applied with 1-1/4" [32 mm] type W screws 16" [406 mm] o.c.
All joints staggered.

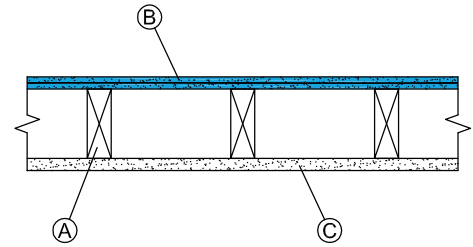
STC RATING

36

OL 17-0327

FIRE RATING

N/A



A 2"x4" [38x89mm] wood studs 16" [406 mm] o.c.

ONE SIDE

B 1/2" [12.7 mm] SilentFX® QuickCut™ applied with 1-1/4" [32 mm] type W screws 16" [406 mm] o.c.

OPPOSITE SIDE

C 1/2" [12.7 mm] CertainTeed Easi-Lite® applied with 1-1/4" [32 mm] type W screws 16" [406 mm] o.c.
All joints staggered.

D 3-1/2" [90 mm] CertainTeed Thermal & Acoustical Fiber Glass Insulation or equivalent.

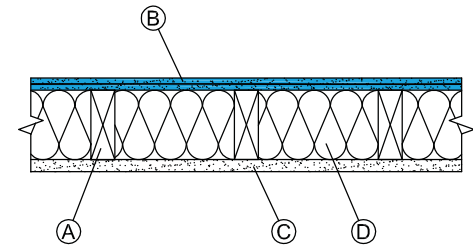
STC RATING

41

OL 17-0328

FIRE RATING

N/A



A 2"x4" [38x89 mm] wood studs 24" [610 mm] o.c.

ONE SIDE

B Face layer 1/2" [12.7 mm] CertainTeed Easi-Lite® applied with 1-5/8" [41 mm] type W screws 16" [406 mm] o.c.

C Base layer 1/2" [12.7 mm] SilentFX® QuickCut™ applied with 1-1/4" [32 mm] type W screws 16" [406 mm] o.c.

OPPOSITE SIDE

D 1/2" [12.7 mm] CertainTeed Easi-Lite® applied with 1-1/4" [32 mm] type W screws 16" [406 mm] o.c.
All joints staggered. No insulation in the cavity.

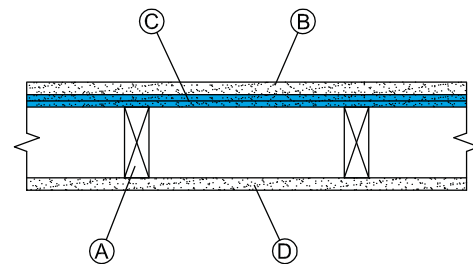
STC RATING

42

OL 17-0210

FIRE RATING

N/A



A 2"x4" [38x89 mm] wood studs 24" [610 mm] o.c.

ONE SIDE

B 1/2" [12.7 mm] SilentFX® QuickCut™ applied with 1-1/4" [32 mm] type W screws 16" [406 mm] o.c.

OPPOSITE SIDE

C 1/2" [12.7 mm] CertainTeed Easi-Lite® applied with 1-1/4" [32 mm] type W screws 16" [406 mm] o.c.
All joints staggered.

D 3-1/2" [90 mm] CertainTeed Thermal & Acoustical Fiber Glass Insulation or equivalent.

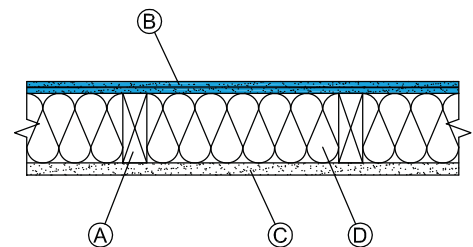
STC RATING

50

OL 17-0208

FIRE RATING

N/A



A 2"x4" [38x89 mm] wood studs 24" [610 mm] o.c.

ONE SIDE

B Face layer 5/8" [15.9 mm] CertainTeed Type X applied with 1-5/8" [41 mm] type W screws 12" [300 mm] o.c.

C Base layer 1/2" [12.7 mm] SilentFX® QuickCut™ applied with 1-1/4" [32 mm] type W screws 16" [406 mm] o.c.

OPPOSITE SIDE

D 5/8" [15.9 mm] CertainTeed Type X applied with 1-1/4" [32 mm] type W screws 12" [300 mm] o.c.
All joints staggered.

E 3-1/2" [90 mm] CertainTeed Thermal & Acoustical Fiber Glass Insulation or equivalent.

STC RATING

52

OL 17-0212

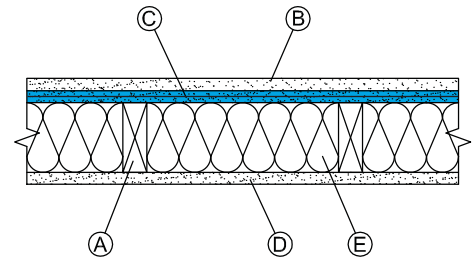
FIRE RATING

1 hr.

UL/cUL U309

ULC W313

GA WP 3510



A 2"x4" [38x89 mm] wood studs 24" [610 mm] o.c.

ONE SIDE

B Face layer 1/2" [12.7 mm] CertainTeed Easi-Lite® applied with 1-5/8" [41 mm] type W screws 16" [406 mm] o.c.

C Base layer 1/2" [12.7 mm] SilentFX® QuickCut™ applied with 1-1/4" [32 mm] type W screws 16" [406 mm] o.c.

OPPOSITE SIDE

D 1/2" [12.7 mm] CertainTeed Easi-Lite® applied with 1-1/4" [32 mm] type W screws 16" [406 mm] o.c.
All joints staggered.

E 3-1/2" [90 mm] CertainTeed Thermal & Acoustical Fiber Glass Insulation or equivalent.

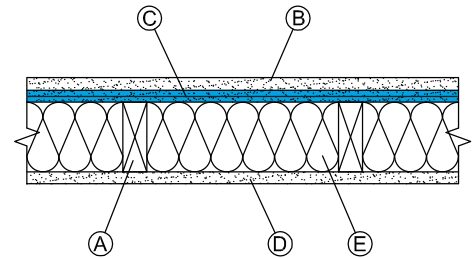
STC RATING

51

OL 17-0209

FIRE RATING

N/A



A 2"x4" [38x89 mm] wood studs 24" [610 mm] o.c.

ONE SIDE

B 1/2" [12.7 mm] SilentFX® QuickCut™ applied with 1-1/4" [32 mm] type W screws 16" [406 mm] o.c.

OPPOSITE SIDE

C 1/2" [12.7 mm] SilentFX® QuickCut™ applied with 1-1/4" [32 mm] type W screws 16" [406 mm] o.c.
All joints staggered.

D 3-1/2" [90 mm] CertainTeed Thermal & Acoustical Fiber Glass Insulation or equivalent.

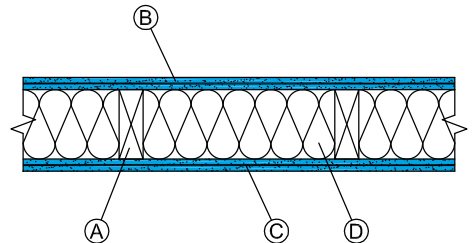
STC RATING

54

OL 17-0211

FIRE RATING

N/A



5/8" [15.9 MM] SILENTFX® QUICKCUT™ – WOOD STUD SYSTEMS

A 2"x4" [38x89 mm] wood studs 24" [610 mm] o.c.

ONE SIDE

B 5/8" [15.9 mm] SilentFX® QuickCut™ Type X applied with 1-1/4" [32 mm] type W screws 12" [300 mm] o.c.

OPPOSITE SIDE

C 1/2" [12.7 mm] CertainTeed Easi-Lite® applied with 1-1/4" [32 mm] type W screws 12" [300 mm] o.c.
All joints staggered.

D 3-1/2" [90 mm] CertainTeed Thermal & Acoustical Fiber Glass Insulation or equivalent.

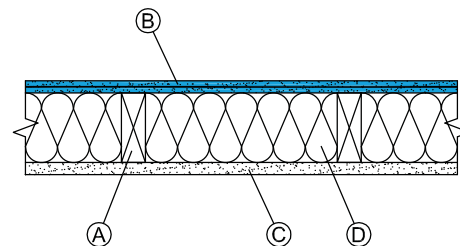
STC RATING

51

OL 17-0207

FIRE RATING

N/A



A 2"x4" [38x89mm] wood studs 24" [610 mm] o.c.

ONE SIDE

B 5/8" [15.9 mm] SilentFX® QuickCut™ Type X applied with 1-1/4" [32 mm] type W screws 12" [300 mm] o.c.

OPPOSITE SIDE

C 5/8" [15.9 mm] SilentFX® QuickCut™ Type X applied with 1-1/4" [32 mm] type W screws 12" [300 mm] o.c.

D 3-1/2" [90 mm] CertainTeed Thermal & Acoustical Fiber Glass Insulation or equivalent

STC RATING

54

OL 15-1110

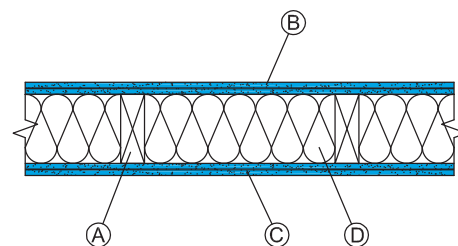
FIRE RATING

1 hr.

UL/cUL U309

ULC W313

GA WP 3510



A 2"x4" [38x89 mm] wood studs 24" [610 mm] o.c.

ONE SIDE

B 5/8" [15.9 mm] SilentFX® QuickCut™ applied with 1-1/4" [32 mm] type W screws 12" [300 mm] o.c.

OPPOSITE SIDE

C 5/8" [15.9 mm] CertainTeed Type X applied with 1-1/4" [32 mm] type W screws 12" [300 mm] o.c.
All joints staggered.

D 3-1/2" [90 mm] CertainTeed Thermal & Acoustical Fiber Glass Insulation or equivalent.

STC RATING

51

OL 15-0503

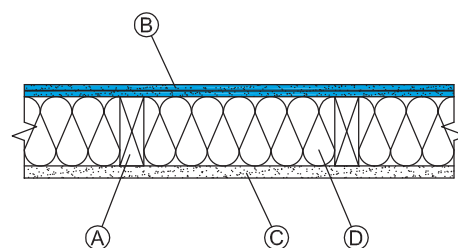
FIRE RATING

1 hr.

UL/cUL U309

ULC W313

GA WP 3246



A 2"x4" [38x89 mm] wood studs 24" [610 mm] o.c.

ONE SIDE

B Resilient channel 24" [610 mm] o.c.

C 5/8" [15.9 mm] SilentFX® QuickCut™ Type X applied with 1" [25 mm] type S screws 12" [300 mm] o.c.

OPPOSITE SIDE

D 5/8" [15.9 mm] CertainTeed Type X applied with 1-1/4" [32 mm] type W screws 12" [300 mm] o.c.
All joints staggered.

E 3-1/2" [90 mm] CertainTeed Thermal & Acoustical Fiber Glass Insulation or equivalent.

STC RATING

56

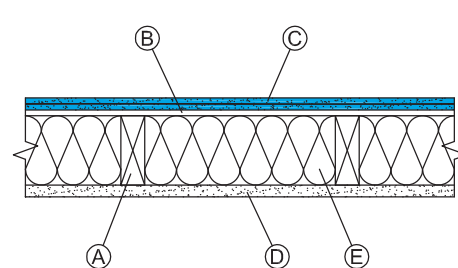
OL 17-0330

FIRE RATING

1 hr.

UL/cUL U309

GA WP 3243



A 2"x4" [38x89 mm] wood studs 24" [610 mm] o.c.

ONE SIDE

B Resilient channel 24" [610 mm] o.c.

C Base layer 5/8" [15.9 mm] SilentFX® QuickCut™ Type X applied with 1" [25 mm] type S screws 12" [300 mm] o.c.

D Face layer 5/8" [15.9 mm] CertainTeed Type X applied with 1-5/8" [41 mm] type S screws 12" [300 mm] o.c.

OPPOSITE SIDE

E 5/8" [15.9 mm] CertainTeed Type X applied with 1-1/4" [32 mm] type W screws 12" [300 mm] o.c.
All joints staggered.

F 3-1/2" [90 mm] CertainTeed Thermal & Acoustical Fiber Glass Insulation or equivalent.

STC RATING

59

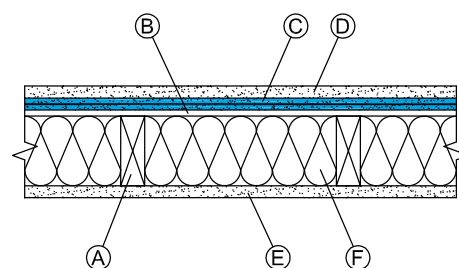
OL 17-0331

FIRE RATING

1 hr.

UL/cUL U305

GA WP 3243



A 2"x4" [38x89 mm] wood studs 16" [406 mm] o.c.

ONE SIDE

B Resilient channel 24" [610 mm] o.c.

C 5/8" [15.9 mm] SilentFX® QuickCut™ Type X applied with 1" [25 mm] type S screws 12" [300 mm] o.c.

OPPOSITE SIDE

D 5/8" [15.9 mm] CertainTeed Type X applied with 1-1/4" [32 mm] type W screws 12" [300 mm] o.c.
All joints staggered.

E 3-1/2" [90 mm] CertainTeed Thermal & Acoustical Fiber Glass Insulation or equivalent.

STC RATING

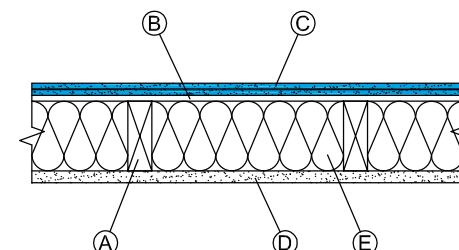
52

OL 17-0226

FIRE RATING

1 hr.

UL/cUL U305



A 2"x4" [38x89 mm] wood studs 16" [406 mm] o.c.

ONE SIDE

B Resilient channel 24" [610 mm] o.c.

C Base layer 5/8" [15.9 mm] SilentFX® QuickCut™ Type X applied with 1" [25 mm] type S screws 12" [300 mm] o.c.

D Face layer 5/8" [15.9 mm] CertainTeed Type X applied with 1-5/8" [41 mm] type S screws 12" [300 mm] o.c.

OPPOSITE SIDE

E 5/8" [15.9 mm] CertainTeed Type X applied with 1-1/4" [32 mm] type W screws 12" [300 mm] o.c.
All joints staggered.

F 3-1/2" [90 mm] CertainTeed Thermal & Acoustical Fiber Glass Insulation or equivalent.

STC RATING

58

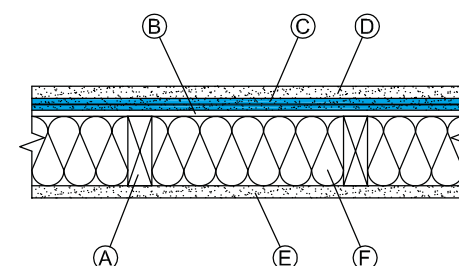
OL 17-0227

FIRE RATING

1 hr.

UL/cUL U305

GA WP 3245



A 2"x4" [38x89 mm] wood studs 24" [610 mm] o.c.

ONE SIDE

B Resilient channel 24" [610 mm] o.c.

C 5/8" [15.9 mm] SilentFX® QuickCut™ Type X applied with 1" [25 mm] type S screws 12" [300 mm] o.c.

OPPOSITE SIDE

D 5/8" [15.9 mm] SilentFX® QuickCut™ Type X applied with 1-1/4" [32 mm] type W screws 12" [300 mm] o.c.
All joints staggered.

E 3-1/2" [90 mm] CertainTeed Thermal & Acoustical Fiber Glass Insulation or equivalent.

STC RATING

59

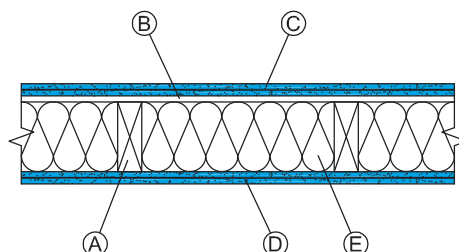
OL 17-0329

FIRE RATING

1 hr.

UL/cUL U309

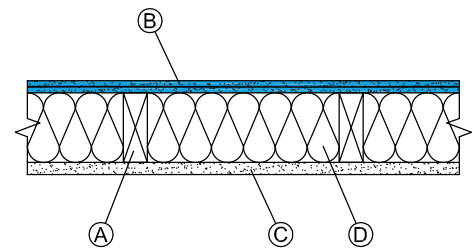
GA WP 3243



- A** 2"x4" [38x89 mm] wood studs 16" [406 mm] o.c.
ONE SIDE
B 5/8" [15.9 mm] SilentFX® QuickCut™ Type X applied with 1-1/4" [32 mm] type W screws 12" [300 mm] o.c.
OPPOSITE SIDE
C 5/8" [15.9 mm] CertainTeed Type X applied with 1-1/4" [32 mm] type W screws 12" [300 mm] o.c.
 All joints staggered.
D 3-1/2" [90 mm] CertainTeed Thermal & Acoustical Fiber Glass Insulation or equivalent.

STC RATING
 45
 OL 17-0225

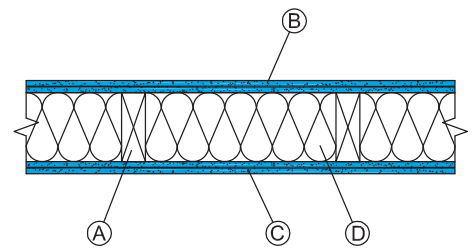
FIRE RATING
 1 hr.
 UL/cUL U305
 GA WP 3605



- A** 2"x4" [38x89 mm] wood studs 16" [406 mm] o.c.
ONE SIDE
B 5/8" [15.9 mm] SilentFX® QuickCut™ Type X applied with 1-1/4" [32 mm] type W screws 12" [300 mm] o.c.
OPPOSITE SIDE
C 5/8" [15.9 mm] SilentFX® QuickCut™ Type X applied with 1-1/4" [32 mm] type W screws 12" [300 mm] o.c.
 All joints staggered.
D 3-1/2" [90 mm] CertainTeed Thermal & Acoustical Fiber Glass Insulation or equivalent.

STC RATING
 45
 OL 17-0219

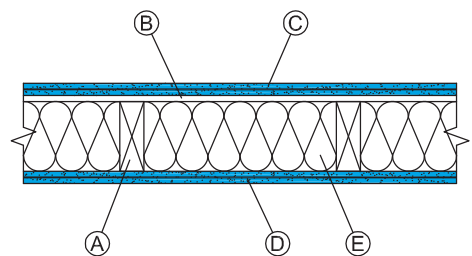
FIRE RATING
 1 hr.
 UL/cUL U305
 GA WP 3605



- A** 2"x4" [38x89 mm] wood studs 16" [406 mm] o.c.
ONE SIDE
B Resilient channel 24" [610 mm] o.c.
C 5/8" [15.9 mm] SilentFX® QuickCut™ Type X applied with 1" [25 mm] type S screws 12" [300 mm] o.c.
OPPOSITE SIDE
D 5/8" [15.9 mm] SilentFX® QuickCut™ Type X applied with 1-1/4" [32 mm] type W screws 12" [300 mm] o.c.
 All joints staggered.
E 3-1/2" [90 mm] CertainTeed Thermal & Acoustical Fiber Glass Insulation or equivalent.

STC RATING
 55
 OL 17-0332

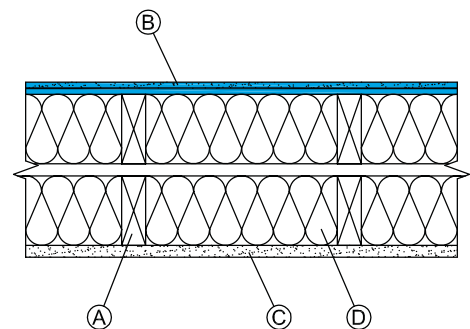
FIRE RATING
 1 hr.
 UL/cUL U305



- A** Double row 2"x4" [38x89 mm] wood studs on separate plates, 16" [406 mm] o.c. with 1" [25 mm] gap.
ONE SIDE
B 5/8" [15.9 mm] SilentFX® QuickCut™ Type X applied with 1-1/4" [32 mm] type W screws 12" [300 mm] o.c.
OPPOSITE SIDE
C 5/8" [15.9 mm] CertainTeed Type X applied with 1-1/4" [32 mm] type W screws 12" [300 mm] o.c.
 All joints staggered.
D 3-1/2" [90 mm] CertainTeed Thermal & Acoustical Fiber Glass Insulation or equivalent.

STC RATING
 61
 OL 17-0214

FIRE RATING
 1 hr.
 UL/cUL U305
 ULC W313
 GA WP 3370



- A** Double row 2"x4" [38x89 mm] wood studs on separate plates, 16" [406 mm] o.c. with 1" [25 mm] gap.

ONE SIDE

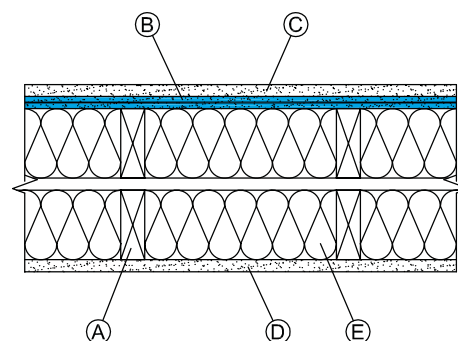
- B** Face layer 5/8" [15.9 mm] CertainTeed Type X applied with 1-5/8" [41 mm] type W screws 12" [300 mm] o.c.
C Base layer 5/8" [15.9 mm] SilentFX® QuickCut™ applied with 1-1/4" [32 mm] type W screws 12" [300 mm] o.c.

OPPOSITE SIDE

- D** 5/8" [15.9 mm] CertainTeed Type X applied with 1-1/4" [32 mm] type W screws 12" [300 mm] o.c.
 All joints staggered.
E 3-1/2" [90 mm] CertainTeed Thermal & Acoustical Fiber Glass Insulation or equivalent.

STC RATING
 63
 OL 17-0215

FIRE RATING
 1 hr.
 UL/cUL U305
 ULC W313
 GA WP 3370



- A** Double row 2"x4" [38x89 mm] wood studs on separate plates, 24" [610 mm] o.c. with 1" [25 mm] gap.

ONE SIDE

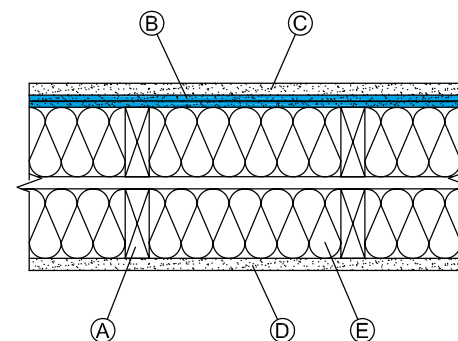
- B** Face layer 5/8" [15.9 mm] CertainTeed Type X applied with 1-5/8" [41 mm] type W screws 12" [300 mm] o.c.
C Base layer 5/8" [15.9 mm] SilentFX® QuickCut™ Type X applied with 1-1/4" [32 mm] type W screws 12" [300 mm] o.c.

OPPOSITE SIDE

- D** 5/8" [15.9 mm] CertainTeed Type X applied with 1-1/4" [32 mm] type W screws 12" [300 mm] o.c.
 All joints staggered.
E 3-1/2" [90 mm] CertainTeed Thermal & Acoustical Fiber Glass Insulation or equivalent.

STC RATING
 62
 OL 17-0304

FIRE RATING
 1 hr.
 UL/cUL U309
 ULC W313
 GA WP 3510



- A** 2"x4" [38x89mm] wood studs 16" [406 mm] o.c. staggered 8" [200 mm] o.c. on 6" [150 mm] plates.

ONE SIDE

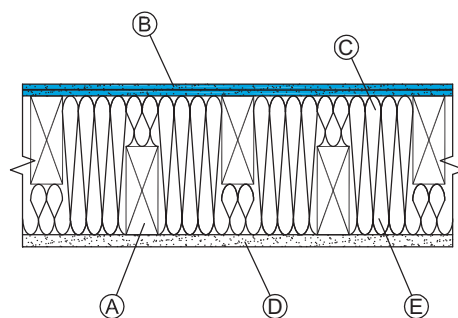
- B** 5/8" [15.9 mm] SilentFX® QuickCut™ Type X applied with 1-1/4" [32 mm] type W screws 12" [300 mm] o.c.
C 3-1/2" (90 mm) CertainTeed Thermal & Acoustical Fiber Glass Insulation or equivalent

OPPOSITE SIDE

- D** 5/8" [15.9 mm] CertainTeed Type X applied with 1-1/4" [32 mm] type W screws 12" [300 mm] o.c.
 All joints staggered
E 3-1/2" [90 mm] CertainTeed Thermal & Acoustical Fiber Glass Insulation or equivalent

STC RATING
 55
 OL 15-1112

FIRE RATING
 1 hr.
 UL/cUL U340
 ULC W313
 GA WP 3371



5/8" [15.9 MM] SILENTFX® QUICKCUT™ – STEEL STUD SYSTEMS

A 3-5/8" [92 mm] 25 ga. steel studs 24" [610 mm] o.c.

ONE SIDE

B 5/8" [15.9 mm] SilentFX® QuickCut™ Type X applied with 1" [25 mm] type S screws 12" [300 mm] o.c.

OPPOSITE SIDE

C 5/8" [15.9 mm] CertainTeed Type X applied with 1" [25 mm] type S screws 12" [300 mm] o.c.
All joints staggered.

D 3-1/2" [90 mm] CertainTeed Thermal & Acoustical Fiber Glass Insulation or equivalent.

STC RATING

56

OL 17-0221

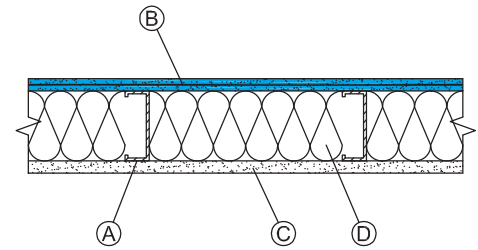
FIRE RATING

1 hr.

UL/cUL U465,

V450, V486

GA WP 1011



A 3-5/8" [92 mm] 25 ga. steel studs 24" [610 mm] o.c.

ONE SIDE

B 5/8" [15.9 mm] SilentFX® QuickCut™ Type X applied with 1" [25 mm] type S screws 12" [300 mm] o.c.

OPPOSITE SIDE

C 5/8" [15.9 mm] SilentFX® QuickCut™ Type X applied with 1" [25 mm] type S screws 12" [300 mm] o.c.
All joints staggered.

D 3-1/2" [90 mm] CertainTeed Thermal & Acoustical Fiber Glass Insulation or equivalent.

STC RATING

58

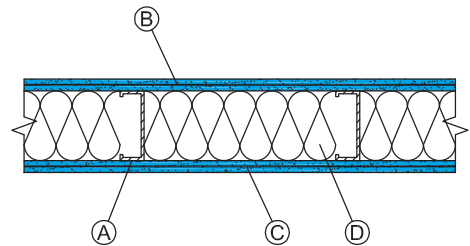
OL 17-0220

FIRE RATING

1 hr.

UL/cUL U465,

V450, V486



A 3-5/8" [92 mm] 25 ga. steel studs 24" [610 mm] o.c.

ONE SIDE

B Base layer 5/8" [15.9 mm] CertainTeed Type X applied with 1" [25 mm] type S screws 12" [300 mm] o.c.

C Face layer 5/8" [15.9 mm] SilentFX® QuickCut™ Type X applied with 1-5/8" [41 mm] type S screws 12" [300 mm] o.c.

OPPOSITE SIDE

D 5/8" [15.9 mm] SilentFX® QuickCut™ Type X applied with 1" [25 mm] type S screws 12" [300 mm] o.c.
All joints staggered.

E 3-1/2" [90 mm] CertainTeed Thermal & Acoustical Fiber Glass Insulation or equivalent.

STC RATING

61

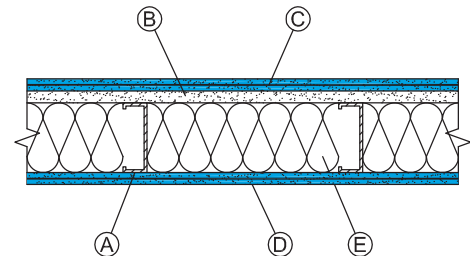
OL 17-0230

FIRE RATING

1 hr.

UL/cUL U465,

V450, V486



A 3-5/8" [92 mm] 25 ga. steel studs 24" [610 mm] o.c.

ONE SIDE

B Face layer 5/8" [15.9 mm] SilentFX® QuickCut™ Type X applied with 1-5/8" [41 mm] type S screws 12" [300 mm] o.c.

C Base layer 5/8" [15.9 mm] CertainTeed Type X applied with 1" [25 mm] type S screws 12" [300 mm] o.c.

OPPOSITE SIDE

D Base layer 5/8" [15.9 mm] CertainTeed Type X applied with 1" [25 mm] type S screws 12" [300 mm] o.c.

E Face layer 5/8" [15.9 mm] CertainTeed Type X applied with 1-5/8" [41 mm] type S screws 12" [300 mm] o.c.
All joints staggered.

F 3-1/2" [90 mm] CertainTeed Thermal & Acoustical Fiber Glass Insulation or equivalent.

STC RATING

60

OL 17-0203

FIRE RATING

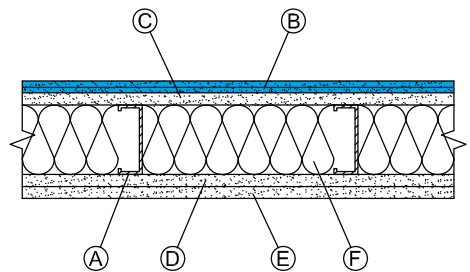
2 hr.

UL/cUL U411,

V450, V486

ULC W404

GA WP 1524



A 3-5/8" [92 mm] 25 ga. steel studs 16" [406 mm] o.c.

ONE SIDE

B 5/8" [15.9 mm] SilentFX® QuickCut™ Type X applied with 1" [25 mm] type S screws 12" [300 mm] o.c.

OPPOSITE SIDE

C 5/8" [15.9 mm] CertainTeed Type X applied with 1" [25 mm] type S screws 12" [300 mm] o.c.

All joints staggered.

D 3-1/2" [90 mm] CertainTeed Thermal & Acoustical Fiber Glass Insulation or equivalent.

STC RATING

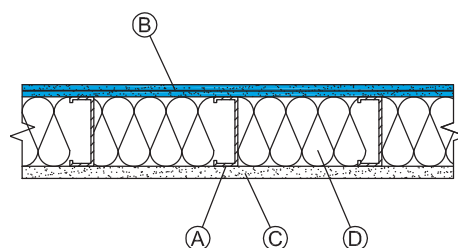
54

OL 17-0222

FIRE RATING

1 hr.

UL/cUL U465,
V450, V486



A 3-5/8" [92 mm] 25 ga. steel studs 16" [406 mm] o.c.

ONE SIDE

B 5/8" [15.9 mm] SilentFX® QuickCut™ Type X applied with 1" [25 mm] type S screws 12" [300 mm] o.c.

OPPOSITE SIDE

C 5/8" [15.9 mm] SilentFX® QuickCut™ Type X applied with 1" [25 mm] type S screws 12" [300 mm] o.c.

All joints staggered.

D 3-1/2" [90 mm] CertainTeed Thermal & Acoustical Fiber Glass Insulation or equivalent.

STC RATING

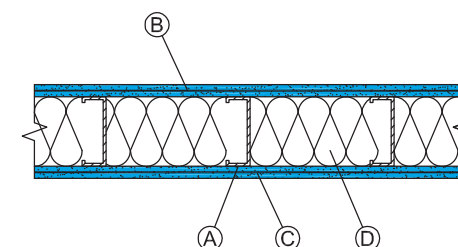
57

OL 17-0223

FIRE RATING

1 hr.

UL/cUL U465,
V450, V486



A 3-5/8" [92 mm] 20 ga. steel studs 16" [406 mm] o.c.

ONE SIDE

B 5/8" [15.9 mm] SilentFX® QuickCut™ Type X applied with 1" [25 mm] type S screws 12" [300 mm] o.c.

OPPOSITE SIDE

C 5/8" [15.9 mm] CertainTeed Type X applied with 1" [25 mm] type S screws 12" [300 mm] o.c.

All joints staggered.

D 3-1/2" [90 mm] CertainTeed Thermal & Acoustical Fiber Glass Insulation or equivalent.

STC RATING

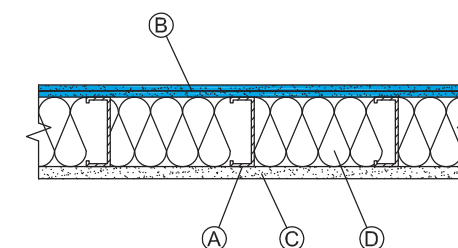
51

OL 17-0302

FIRE RATING

1 hr.

UL/cUL U465,
U425
ULC U418



A 3-5/8" [92 mm] 20 ga. steel studs 16" [406 mm] o.c.

ONE SIDE

B 5/8" [15.9 mm] SilentFX® QuickCut™ Type X applied with 1" [25 mm] type S screws 12" [300 mm] o.c.

OPPOSITE SIDE

C 5/8" [15.9 mm] SilentFX® QuickCut™ Type X applied with 1" [25 mm] type S screws 12" [300 mm] o.c.

All joints staggered.

D 3-1/2" [90 mm] CertainTeed Thermal & Acoustical Fiber Glass Insulation or equivalent.

STC RATING

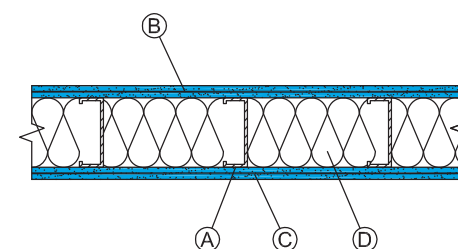
56

OL 17-0301

FIRE RATING

1 hr.

UL/cUL U465,
U425
ULC U418
GA WP 1012



A 3-5/8" [92 mm] 20 ga. steel studs 24" [610 mm] o.c.

ONE SIDE

B 5/8" [15.9 mm] SilentFX® QuickCut™ Type X applied with 1" [25 mm] type S screws 12" [300 mm] o.c.

OPPOSITE SIDE

C 5/8" [15.9 mm] CertainTeed Type X applied with 1" [25 mm] type S screws 12" [300 mm] o.c.

All joints staggered.

D 3-1/2" [90 mm] CertainTeed Thermal & Acoustical Fiber Glass Insulation or equivalent.

STC RATING

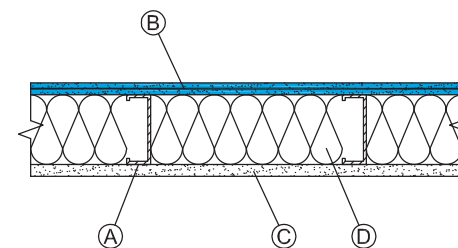
56

OL 17-0229

FIRE RATING

1 hr.

UL/cUL U465,
U425
ULC U418
GA WP 1011



A 3-5/8" [92 mm] 20 ga. steel studs 24" [610 mm] o.c.

ONE SIDE

B 5/8" [15.9 mm] SilentFX® QuickCut™ Type X applied with 1" [25 mm] type S screws 12" [300 mm] o.c.

OPPOSITE SIDE

C 5/8" [15.9 mm] SilentFX® QuickCut™ Type X applied with 1" [25 mm] type S screws 12" [300 mm] o.c.
All joints staggered.

D 3-1/2" [90 mm] CertainTeed Thermal & Acoustical Fiber Glass Insulation or equivalent.

STC RATING

58

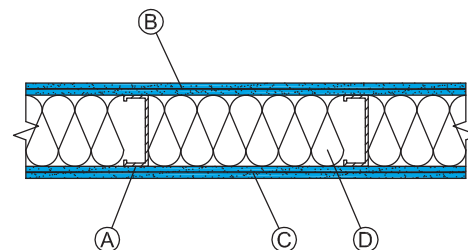
OL 17-0228

FIRE RATING

1 hr.

UL/cUL U465,
U425

ULC U418



A 3-5/8" [92 mm] 20 ga. steel studs 16" [406 mm] o.c.

ONE SIDE

B Base layer 5/8" [15.9 mm] SilentFX® QuickCut™ Type X applied with 1" [25 mm] type S screws 12" [300 mm] o.c.

C Face layer 5/8" [15.9 mm] CertainTeed Type X applied with 1"-5/8" [41 mm] type S screws 12" [300 mm] o.c.

OPPOSITE SIDE

D Base layer 5/8" [15.9 mm] CertainTeed Type X applied with 1" [25 mm] type S screws 12" [300 mm] o.c.

E Face layer 5/8" [15.9 mm] CertainTeed Type X applied with 1-5/8" [41 mm] type S screws 12" [300 mm] o.c.
All joints staggered.

F 3-1/2" [90 mm] CertainTeed Thermal & Acoustical Fiber Glass Insulation or equivalent.

STC RATING

58

OL 17-0303

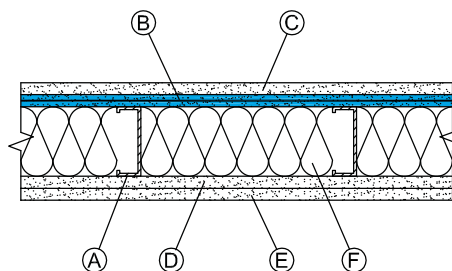
FIRE RATING

2 hr.

UL/cUL U411,
U425

ULC W404

GA WP 1524



A 3-5/8" [92 mm] 16 ga. steel studs 16" [406 mm] o.c.

ONE SIDE

B 5/8" [15.9 mm] SilentFX® QuickCut™ Type X applied with 1-1/4" [32 mm] type S-12 screws 12" [300 mm] o.c.

OPPOSITE SIDE

C 5/8" [15.9 mm] CertainTeed Type X applied with 1-1/4" [32 mm] type S-12 screws 12" [300 mm] o.c.
All joints staggered.

D 3-1/2" [90 mm] CertainTeed Thermal & Acoustical Fiber Glass Insulation or equivalent.

STC RATING

48

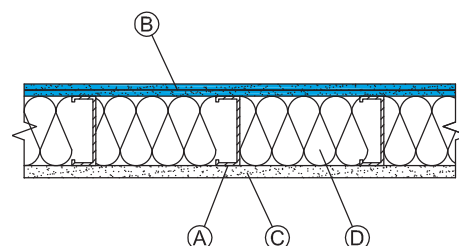
OL 17-0324

FIRE RATING

1 hr.

UL/cUL U465,
U425

ULC U418



A 3-5/8" [92 mm] 16 ga. steel studs 16" [406 mm] o.c.

ONE SIDE

B 5/8" [15.9 mm] SilentFX® QuickCut™ Type X applied with 1-1/4" [32 mm] type S-12 screws 12" [300 mm] o.c.

OPPOSITE SIDE

C 5/8" [15.9 mm] SilentFX® QuickCut™ applied with 1-1/4" [32 mm] type S-12 screws 12" [300 mm] o.c.
All joints staggered.

D 3-1/2" [90 mm] CertainTeed Thermal & Acoustical Fiber Glass Insulation or equivalent.

STC RATING

49

OL 17-0323

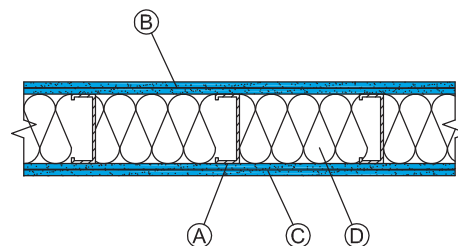
FIRE RATING

1 hr.

UL/cUL U465,
U425

ULC U418

GA WP 1012



A 3-5/8" [92 mm] 16 ga. steel studs 16" [406 mm] o.c.

ONE SIDE

B Resilient channel 24" [610 mm] o.c.

C 5/8" [15.9 mm] SilentFX® QuickCut™ Type X with 1" [25 mm] type S screws 12" [300 mm] o.c.

OPPOSITE SIDE

D 5/8" [15.9 mm] CertainTeed Type X applied with 1-1/4" [32 mm] type S-12 screws 12" [300 mm] o.c.

All joints staggered.

E 3-1/2" [90 mm] CertainTeed Thermal & Acoustical Fiber Glass Insulation or equivalent.

STC RATING

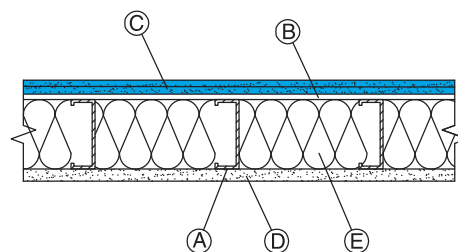
53

OL 17-0325

FIRE RATING

1 hr.

UL/cUL U465



A 4" [102 mm] 16 ga. steel studs 16" [406 mm] o.c.

ONE SIDE

B 5/8" [15.9 mm] SilentFX® QuickCut™ Type X with 1-1/4" [32 mm] type S-12 screws 12" [300 mm] o.c.

OPPOSITE SIDE

C 5/8" [15.9 mm] CertainTeed Type X applied with 1-1/4" [32 mm] type S-12 screws 12" [300 mm] o.c.

All joints staggered.

D 3-1/2" [90 mm] CertainTeed Thermal & Acoustical Fiber Glass Insulation or equivalent.

STC RATING

50

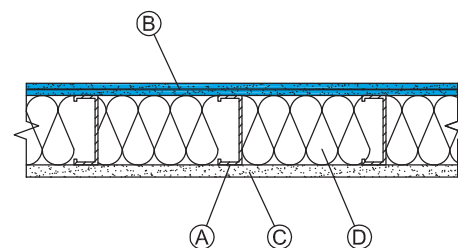
OL 17-0231

FIRE RATING

1 hr.

UL/cUL U465,
U425

ULC U418



A 4" [102 mm] 16 ga. steel studs 16" [406 mm] o.c.

ONE SIDE

B 5/8" [15.9 mm] SilentFX® QuickCut™ Type X applied with 1-1/4" [32 mm] type S-12 screws 12" [300 mm] o.c.

OPPOSITE SIDE

C 5/8" [15.9 mm] SilentFX® QuickCut™ applied with 1-1/4" [32 mm] type S-12 screws 12" [300 mm] o.c.

All joints staggered.

D 3-1/2" [90 mm] CertainTeed Thermal & Acoustical Fiber Glass Insulation or equivalent.

STC RATING

52

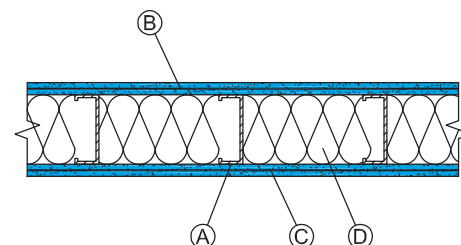
OL 17-0224

FIRE RATING

1 hr.

UL/cUL U465,
U425

ULC U418



A 6" [152 mm] 16 ga. steel studs 16" [406 mm] o.c.

ONE SIDE

B 5/8" [15.9 mm] SilentFX® QuickCut™ Type X applied with 1-1/4" [32 mm] type S-12 screws 12" [300 mm] o.c.

OPPOSITE SIDE

C 5/8" [15.9 mm] CertainTeed Type X applied with 1-1/4" [32 mm] type S-12 screws 12" [300 mm] o.c.

All joints staggered.

D 6" [152 mm] CertainTeed Thermal & Acoustical Fiber Glass Insulation or equivalent.

STC RATING

52

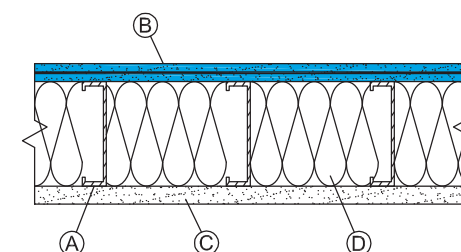
OL 17-0321

FIRE RATING

1 hr.

UL/cUL U465,
U425

ULC U418



A 6" [152 mm] 20 ga. steel studs 16" [406 mm] o.c.

ONE SIDE

B 5/8" [15.9 mm] SilentFX® QuickCut™ Type X applied with 1" [25 mm] type S screws 12" [300 mm] o.c.

OPPOSITE SIDE

C 5/8" [15.9 mm] SilentFX® QuickCut™ Type X applied with 1" [25 mm] type S screws 12" [300 mm] o.c.

All joints staggered.

D 6" [152 mm] CertainTeed Thermal & Acoustical Fiber Glass Insulation or equivalent.

STC RATING

56

OL 17-0305

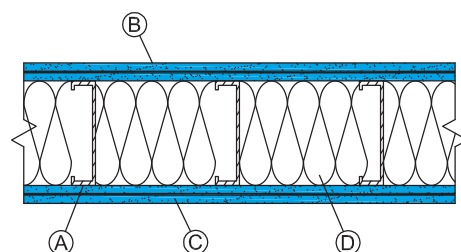
FIRE RATING

1 hr.

UL/cUL U465,
U425

ULC U418

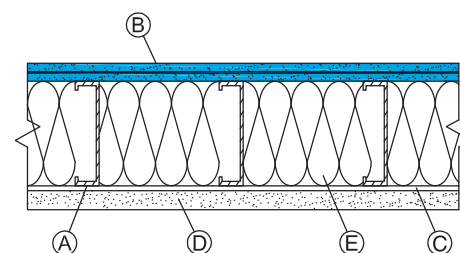
GA WP 1012



- A** 6" [152 mm] 20 ga. steel studs 16" [406 mm] o.c.
ONE SIDE
B 5/8" [15.9 mm] SilentFX® QuickCut™ Type X with 1" [25 mm] type S screws 12" [300 mm] o.c.
OPPOSITE SIDE
C Resilient channel 24" [610 mm] o.c.
D 5/8" [15.9 mm] CertainTeed Type X applied with 1" [25 mm] type S screws 12" [300 mm] o.c.
 All joints staggered.
E 6" [152 mm] CertainTeed Thermal & Acoustical Fiber Glass Insulation or equivalent.

STC RATING
 57
 OL 17-0306

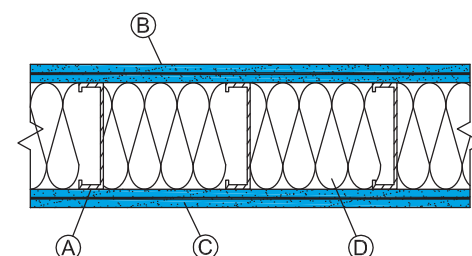
FIRE RATING
 1 hr.
 UL/cUL U465



- A** 6" [152 mm] 16 ga. steel studs 16" [406 mm] o.c.
ONE SIDE
B 5/8" [15.9 mm] SilentFX® QuickCut™ Type X applied with 1-1/4" [32 mm] type S-12 screws 12" [300 mm] o.c.
OPPOSITE SIDE
C 5/8" [15.9 mm] SilentFX® QuickCut™ Type X applied with 1-1/4" [32 mm] type S-12 screws 12" [300 mm] o.c.
 All joints staggered.
D 6" [152 mm] CertainTeed Thermal & Acoustical Fiber Glass Insulation or equivalent.

STC RATING
 56
 OL 17-0322

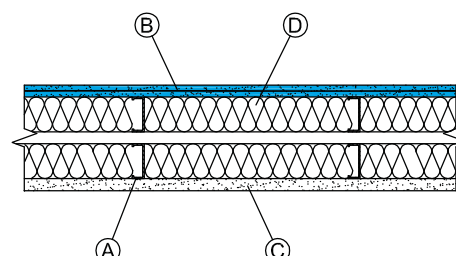
FIRE RATING
 1 hr.
 UL/cUL U465,
 U425
 ULC U418
 GA WP 1012



- A** Double row 2-1/2" [63.5 mm] 25 ga. steel studs 24" [610 mm] o.c., in separate tracks with a 1" [25 mm] gap.
ONE SIDE
B 5/8" [15.9 mm] SilentFX® QuickCut™ Type X applied with 1" [25 mm] type S screws 12" [300 mm] o.c.
OPPOSITE SIDE
C 5/8" [15.9 mm] CertainTeed Type X applied with 1" [25 mm] type S screws 12" [300 mm] o.c.
 All joints staggered.
D 3-1/2" [90 mm] CertainTeed Thermal & Acoustical Fiber Glass Insulation or equivalent, both rows.

STC RATING
 61
 OL 17-0202

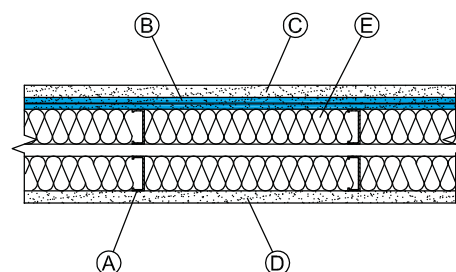
FIRE RATING
 1 hr.
 UL/cUL U420
 GA WP 5015



- A** Double row 2-1/2" [63.5 mm] 25 ga. steel studs 24" [610 mm] o.c., in separate tracks with a 1" [25 mm] gap.
ONE SIDE
B Base layer 5/8" [15.9 mm] SilentFX® QuickCut™ Type X applied with 1" [25 mm] type S screws 12" [300 mm] o.c.
C Face layer 5/8" [15.9 mm] CertainTeed Type X applied with 1-5/8" [41 mm] type S screws 12" [300 mm] o.c.
OPPOSITE SIDE
D 5/8" [15.9 mm] CertainTeed Type X applied with 1" [25 mm] type S screws 12" [300 mm] o.c.
 All joints staggered.
E 3-1/2" [90 mm] CertainTeed Thermal & Acoustical Fiber Glass Insulation or equivalent, both rows.

STC RATING
 62
 OL 17-0201

FIRE RATING
 1 hr.
 UL/cUL U420
 GA WP 5015



NOTES

SilentFX® QuickCut™ can be used as either the base or face layer in a multi-layer system without affecting the STC rating. Equivalent fiber glass insulations may be substituted for CertainTeed Insulation products.

5/8" [15.9 MM] SILENTFX® QUICKCUT™ – WOOD I-JOIST FLOOR-CEILING SYSTEMS

SOUND RATING
FLOOR-CEILING ASSEMBLY DESCRIPTION

BASE ASSEMBLY
ONE SIDE

- A Subflooring Nom. 19/32" (15.1 mm) T&G plywood perpendicular to joists with end joints staggered and secured to joists with construction adhesive and 6D ring shank nails or staples 12" (305 mm) o.c.
- B Wood I-joists 9-1/2" (241 mm) deep wood I-joists spaced 24" (610 mm) o.c.
- C Insulation 9-1/2" (241 mm) CertainTeed Optima® Loose Fill Insulation

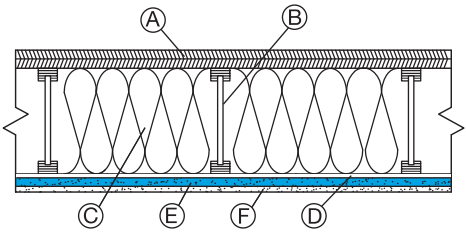
OPPOSITE SIDE

- D Resilient channels installed perpendicular to I-joists at 12" (305 mm) o.c.
- E Base layer 5/8" (15.9 mm) SilentFX® QuickCut™ Type X applied perpendicular to resilient channel with 1" (25 mm) type S screws 8" (203 mm) o.c.
- F Face layer 1/2" (12.7 mm) CertainTeed Type C applied perpendicular to the resilient channel with 1-5/8" (41 mm) type S screws 8" (203 mm) o.c.

STC RATING
54 (NGC 5017060)

IIC RATING
46 (NGC 5017091)

FIRE RATING
1 hr.
UL/cUL M535



SOUND RATING
FLOOR-CEILING ASSEMBLY DESCRIPTION

Base Assembly + finished floor of 3/4" (19.1 mm) Gypsum
Concrete floor topping over sound mat with Carpet and Pad

Base Assembly + finished floor of 3/4" (19.1 mm) Gypsum
Concrete floor topping over sound mat with 3/16" (5 mm)
Luxury Vinyl Tile (LVT)

Base Assembly + finished floor of 3/4" (19.1 mm) Gypsum
Concrete floor topping over sound mat with 3/16" (5 mm)
Luxury Vinyl Tile (LVT) over underlayment

Base Assembly + finished floor of 3/4" (19.1 mm) Gypsum
Concrete floor topping over sound mat with 3/8" (9.5 mm)
Luxury Vinyl Tile (LVT) over Engineered Hardwood

STC (TEST NO.)	IIC (TEST NO.)
60 (NGC 5017069)	78 (NGC 5017110)
60 (NGC 5017070)	57 (NGC 5017111)
62 (NGC 5017071)	58 (NGC 5017112)
60 (NGC 5017072)	58 (NGC 5017113)



2015 National Building Code of Canada

APPARENT SOUND TRANSMISSION CLASS (ASTC)

In previous editions of the National Building Code of Canada (NBC), sound insulation requirements between dwelling units were presented in terms of Sound Transmission Class (STC).

In the NBC 2015, sound insulation requirements are now also presented in terms of Apparent Sound Transmission Class (ASTC). ASTC includes the contributions from flanking transmission of sound and therefore is a better descriptor of the acoustic performance of the building. The ASTC rating between dwelling units must be 47 or greater for compliance with the 2015 NBC.

CertainTeed Gypsum contracted with the National Research Council Canada (NRC-CNRC) to conduct extensive testing and calculation programs for SilentFX QuickCut Gypsum Board on wood and steel stud wall assemblies with example assemblies provided on the following page. For complete details of the ASTC programs, please refer to NRC-CNRC Reports A1-007750.3 (Wood Stud Walls) and A1-010179.1 (Steel Stud Walls) on the NRC-CNRC website or contact CertainTeed Marketing Technical Services at 1-800-446-5284.

EXAMPLES OF WOOD AND STEEL STUD ASSEMBLIES

- A** 2"x4" [38x89mm] wood studs 16" [406 mm] o.c. staggered
8" [200 mm] o.c. on 6" [150 mm] plates.

ONE SIDE

- B** 5/8" [15.9 mm] SilentFX® QuickCut™ Type X applied with 1-1/4" [32 mm] type W screws 12" [300 mm] o.c.

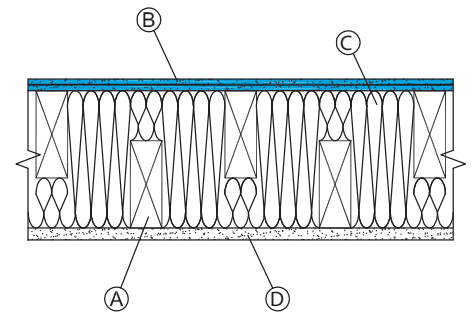
- C** 3-1/2" (90 mm) CertainTeed NoiseReducer™ Sustainable Insulation or equivalent

OPPOSITE SIDE

- D** 5/8" [15.9 mm] CertainTeed Type X applied with 1-1/4" [32 mm] type W screws 12" [300 mm] o.c.
All joints staggered

ASTC RATING
50

FIRE RATING
1 hr.
UL/cUL U340
ULC W313



- A** 2"x4" [38x89mm] wood studs 16" [406 mm] o.c. staggered
8" [200 mm] o.c. on 6" [150 mm] plates.

ONE SIDE

- B** 5/8" [15.9 mm] SilentFX® QuickCut™ Type X applied with 1-1/4" [32 mm] type W screws 12" [300 mm] o.c.

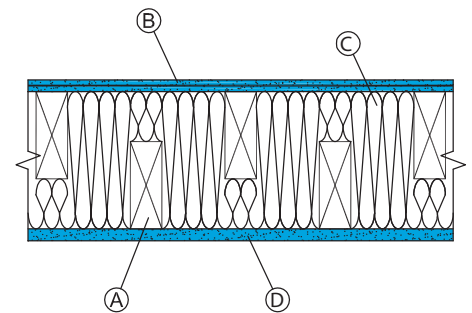
- C** 3-1/2" (90 mm) CertainTeed NoiseReducer™ Sustainable Insulation or equivalent

OPPOSITE SIDE

- D** 5/8" [15.9 mm] SilentFX® QuickCut™ Type X applied with 1-1/4" [32 mm] type W screws 12" [300 mm] o.c.
All joints staggered

ASTC RATING
54

FIRE RATING
1 hr.
UL/cUL U340
ULC W313



- A** 3-5/8" [92 mm] 25 ga. steel studs 16" [406 mm] o.c.

ONE SIDE

- B** 5/8" [15.9 mm] SilentFX® QuickCut™ Type X applied with 1" [25 mm] type S screws 12" [300 mm] o.c.

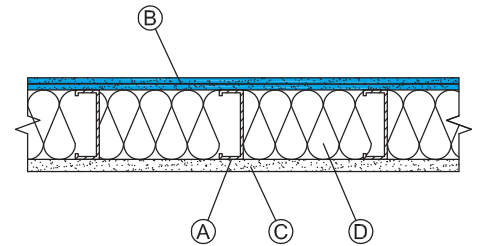
OPPOSITE SIDE

- C** 5/8" [15.9 mm] CertainTeed Type X applied with 1" [25 mm] type S screws 12" [300 mm] o.c.
All joints staggered.

- D** 3-1/2" [90 mm] CertainTeed NoiseReducer™ Sustainable Insulation or equivalent.

ASTC RATING
47

FIRE RATING
1 hr.
UL/cUL U465,
V450, V486



- A** 3-5/8" [92 mm] 25 ga. steel studs 16" [406 mm] o.c.

ONE SIDE

- B** 5/8" [15.9 mm] SilentFX® QuickCut™ Type X applied with 1" [25 mm] type S screws 12" [300 mm] o.c.

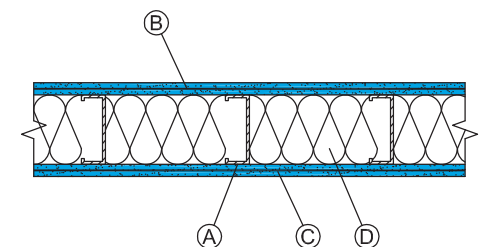
OPPOSITE SIDE

- C** 5/8" [15.9 mm] SilentFX® QuickCut™ Type X applied with 1" [25 mm] type S screws 12" [300 mm] o.c.
All joints staggered.

- D** 3-1/2" [90 mm] CertainTeed NoiseReducer™ Sustainable Insulation or equivalent.

ASTC RATING
48

FIRE RATING
1 hr.
UL/cUL U465,
V450, V486





CertainTeed Builds Better Environments

CertainTeed has the unique advantage of offering some of the most comprehensive interior building solutions in the industry.



silentFX
QuickCut

SilentFX® QuickCut™ noise-reducing acoustical gypsum board with M2Tech® for added moisture and mold resistance.



Diamondback

The GlasRoc® reinforced glass mat family of products includes Diamondback® Tile Backer for use in moisture-prone spaces.



AirRenew M2TECH™

AirRenew® M2Tech® formaldehyde-absorbing indoor air quality gypsum board with M2Tech® for added moisture and mold resistance.



GlasRoc

GlasRoc® Sheathing, Shaftliner and Roof Board provide added moisture and mold resistance, fire resistance and durability. CertainTeed Type X and Type C gypsum boards are standard fire-resistant paper-faced products.



EXTREME ABUSE **EXTREME IMPACT**

Extreme Abuse and Extreme Impact provide added durability, with M2Tech® for added moisture and mold resistance.



Easi-Lite

Easi-Lite® lightweight interior gypsum board as well as other CertainTeed paper-faced gypsum boards are made of up to 99% recycled paper and are easily recycled after use.



M2TECH

M2Tech® gypsum board is made with technology specially formulated for enhanced moisture and mold resistance.



The No-Coat® Structural Laminate Drywall Corner System

Specify NO-COAT, and guarantee the highest performing drywall corner trim available.

The NO-COAT® Structural Laminate (SLAM™) Drywall Corner System represents a revolutionary drywall finishing solution that outperforms all other corners in the market.

NO-COAT DELIVERS:

- Superior strength and durability
- Faster drywall corner installation
- Bottom line savings in labor and mud compared to traditional corner bead design
- Elimination of costly callbacks and drywall repairs

Whether finishing off-angles, archways, inside or outside corners, NO-COAT offers a complete drywall corner trim system for every job.

SLAM™ TECHNOLOGY

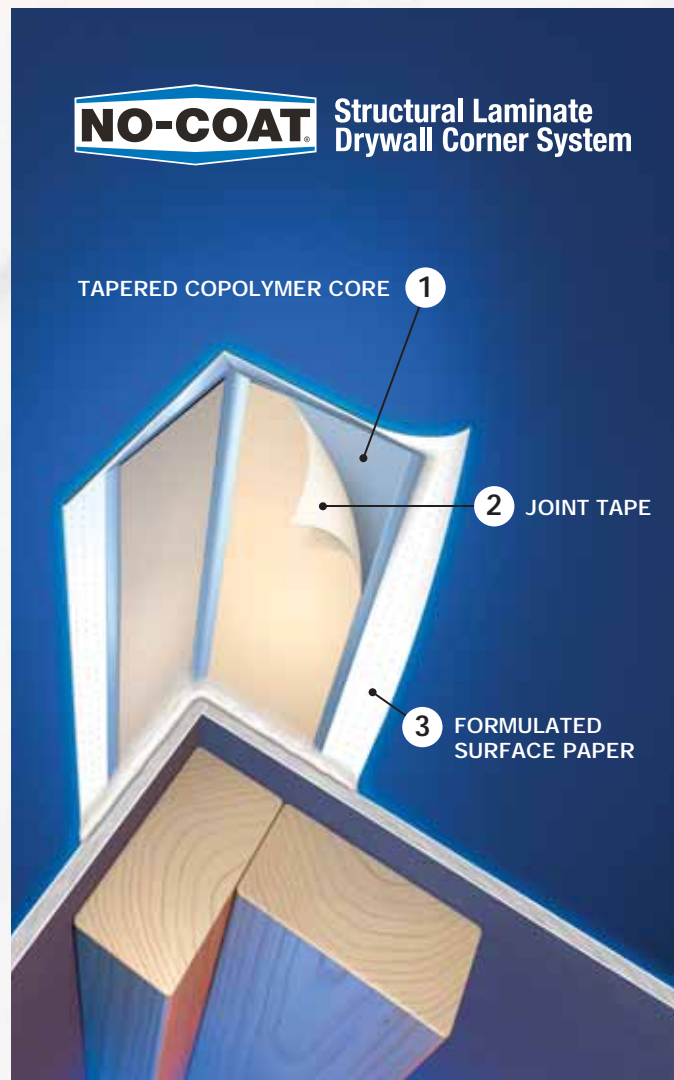
SLAM™ Technology integrates three key components providing the durability, flexibility, and strength that won't crack under pressure:

1. **Tapered copolymer core** that will not rust, requires less mud and is capable of withstanding severe impacts
2. **Joint tape** that permanently bonds the corner to drywall with all-purpose joint compound
3. **Formulated surface paper** that eliminates cracks, chips and peels, accepts any finish and resists abrasion

A RADICAL DEPARTURE FROM CORNER BEAD

For the past 60 years, drywall contractors have reached for corner bead because it has been the only option available – not because it's the best product.

Recent improvements such as plastic or paper faced metal are still based on a flawed bead design that creates more problems than it solves. Beads are notorious in the industry for causing costly callbacks from denting, chipping, rusting, cracking and peeling. In addition, beads require excessive mud application that costs contractors time and money.



SilentFX® QuickCut™ Noise-Reducing Gypsum Board is manufactured in nominal 1/2" (12.7 mm) and 5/8" (15.9 mm) Type X, 48" (1220 mm) width by 8' (2440 mm), 9' (2745 mm), 10' (3050 mm) and 12' (3660 mm) lengths.

Product Specifications

Product	Product Standards	Application Standards
1/2" SilentFX® QuickCut™	ASTM C1766, C1396 and C1629	ASTM C840; GA-216; CAN/CSA-A82.31
5/8" SilentFX® QuickCut™ Type X	ASTM C1766, C1396 and C1629	ASTM C840; GA-216; CAN/CSA-A82.31
	1/2" (12.7 mm)	5/8" (15.9 mm) Type X
Widths	48" (1220 mm)	48" (1220 mm)
Standard Lengths*	8' (2440 mm)	8' (2440 mm)
	9' (2745 mm)	9' (2745 mm)
	10' (3050 mm)	10' (3050 mm)
	12' (3660 mm)	12' (3660 mm)
Weight	2.1 psf (10.3 kg/m²)	2.8 psf (13.7kg/m²)
Edges	Tapered	Tapered
Flame Spread	5	5
Smoke Developed	5	5
Mold Resistance Rating** (ASTM D3273)	10	10
Abuse Resistance Classifications (ASTM C1629)		
Surface Abrasion (D 4977)	2	2
Soft Body Impact (E 695)	1	1

The performance of SilentFX® QuickCut™ Noise-Reducing Gypsum Board in actual use may not accurately reproduce these ASTM laboratory test results. Good design and construction practices that prevent exposure of building products to water and moisture are the most effective strategy to avoid mold growth.

* Special lengths or edges may be available as a special order. Please contact your CertainTeed Representative.

Standard lengths may differ by region, please contact your sales rep for more information.

** No mold growth detected. Note: 10 is the best possible rating for ASTM D3273.

The Health Product Declaration™ and logo is owned by the Health Product Declaration Collaborative™ and is used with permission.



CertainTeed Corporation

ROOFING • SIDING • TRIM • DECKING • RAILING • FENCE • GYPSUM • CEILINGS • INSULATION

20 Moores Road Malvern, PA 19355 Professional: 800-233-8990 Consumer: 800-782-8777 certainteed.com