



FLAME FIGHTER

DRYWALL FINISHING TAPE

**CANADIAN
TECH MANUAL**

**E-Z TAPING SYSTEM, INC.
GREEN BAY, WI
800-721-8273**

TABLE OF CONTENTS

FIRE TAPE- CANADA

1. Table of Contents
2. 1 & 2 Hour rating, Self-Test
3. Architectural Specifications
4. Technical Information
5. Intertek Testing Accreditation Memo
6. Intertek Testing Letter
7. Intertek Testing – 1 Hour Rating
8. Intertek Testing – 2 Hour Rating
9. 1 Hour, Non-Bearing Wall, Design EZTA/WA 60-01
10. 1 Hour, Bearing Wall, Design EZTA/WA 60-02
11. 2 Hour, Non-Bearing Wall, Design EZTA/WA 120-01
12. 2 Hour, Non-Bearing Wall, Part 2
13. 2 Hour, Bearing Wall, Design EZTA/WA 120-02
14. 2 Hour, Bearing Wall, Part 2
15. Installation Instructions
16. Money Savings
17. MSDS Sheets

Revised: April, 2008



E-Z Taping System, Inc., P.O. Box 11263, Green Bay, WI 54307
(800) 721-8273, Fax (866) 248-8312

April 2, 2006

TO: FIRE TAPE DEALERS AND USERS:

SUBJ: NEW ICC-EVALUATION RATING

ICBO, BOCA, and SBCCI recently merged into ICC-Evaluation Service, Inc. This gives us one rating service to deal with rather than three. Their new rating, ESR-1231, replaces the individual ratings we had with each of the groups. A copy of the new rating is now part of our technical information. ESR-1231 complies with the International Building Codes (IBC and IRC) and Uniform Building Codes (UBC), which have been adopted by all of the States.

The FIRE TAPE continues to be rated for use with two-hour fire rated wall systems, constructed with fire rated gypsum board for use in the US and Canadian Market by Intertek Testing Services (formerly Warnock Hersey). This use is only for vertically hung wall systems, on both wood and steel stud construction.



E-Z FIRE TAPE can also be used for one hour fire rated vertically or horizontally hung wall systems, on both wood and steel stud construction with fire rated gypsum board Canada and the US market.

We continue to recommend that all dealers and users do the SELF-TEST before selling or using the TAPE to see how easy and how effective it is:

1. Cut three 12-18 inch strips of FIRE TAPE from a sample roll.
2. Attach them gently to a clean piece of drywall.
3. Rub the first hard with your enclosed fist or the palm of your hand.
4. Rub the second hard with a 2 or 3 inch steel knife used by drywall contractors.
5. Rub the third hard with our 3" plastic knife applicator.
6. Wait 10 minutes and then remove the tape from the drywall.

Note how the FIRE TAPE peels the paper from the drywall! The rubbing creates friction, which creates heat, which causes the adhesive to active and therefore bond to the wallboard paper. You will get the best bonding when you use our 3" plastic knife applicator. If there is no fiber from the drywall paper stuck to the TAPE, you do not have good bonding. Once you get bonding as seen from the self-test, the TAPE will not come off the drywall.

Our on going store support program includes brochures and samples to hand out to your customers. Call us today at 800-721-8273 if you need more of these.

Thanks for your help with the sales and marketing of E-Z TAPING products.
Sincerely,

E-Z TAPING SYSTEMS, INC.

Visit Our Website at www.eztapingsystem.com



*E-Z Taping System, Inc., P.O. Box 11263, Green Bay, WI 54307
(800) 721-8273, Fax (866) 248-8312*

ARCHITECTURAL SPECIFICATIONS

PART 1 GENERAL

1. **Scope** – Specify to meet project requirements
2. **Qualifications** – All materials shall be installed in accordance with its current printed direction.
3. **Delivery and Storage of Materials**
All materials shall be delivered in their original unopened packages and stored in an enclosed shelter providing protection from damage and exposure to the elements or deteriorated materials shall be removed from the premises.

PART 2 PRODUCTS

1. **Materials**
 - a. **Gypsum Panels:** (thickness 5/8") (Width) (Length) (Type X).
 - b. **Screws:** (Length, type).
 - c. **Nails:** (Length) (Type) (Conforming to Gypsum Association and AWCI Specifications) as specified in **Fire-Resistive Construction** – obtain locally.
 - d. **Joint Reinforcement:** E-Z Taping System ® E-Z Fire Tape® Mudless Drywall Tape.

PART 3...EXECUTION

1. **Gypsum Panel Application**
 - a. Position and apply gypsum panels in accordance with manufacturer's recommendations.
2. **Joint Treatment**
 - a. Factory edge joint-cover seams with one lay of E-Z Taping System®Fire Tape®Mudless drywall tape on flats and angles on fire rated Gypsum Board.
 - b. To assure strong adhesion, wipe down with an E-Z Taping System 3" rub down knife.
 - c. Fire Tape is designed to cover or bridge normal seams and angles. It is not to be used to cover large holes or gaps or substitute in any way for fire rated drywall.

PRODUCT DATA:

MATERIAL: A fiberglass reinforced pressure sensitive paper tape.
WIDTH: Nom.2 (48mm)
COVERAGE: Approximately 370 ft./1000 sq. ft. (121-m/100 sq. m) Gypsum Panels.

PACKAGING:

250-FT. (76.2m) /ROLL: Sized for hand or tool application.
MASTER CARTON: Contains 20 each 250-ft. (76.2m) rolls.
TRADEMARK: The trademarks used herein are owned by E-Z Taping System, Inc.,
Patent Pending

TECHNICAL INFORMATION

Joints and Seams

During the application of E-Z Fire Tape, whether on even or uneven joints and seams, we recommend you use the E-Z Taping System plastic 3" knife by first aggressively wiping down one side of the tape and then wiping the remaining part of the tape to assure maximum adhesion.

Outside Corners

When fire taping an outside corner, both sides of the tape should be wiped down. We have found that by wiping down one side of the tape and then stretching the tape around the corner and wiping down the remaining side, you have achieved a strong bond and have met your fire taping requirements. When wiping down fire tape, always use the E-Z Tape plastic 3" knife to maximize adhesion between the tape and board.

Overlapping

The top sheet on Fire Tape is specially designed to prevent the tape from sticking to itself. In areas where you must overlap the tape, such as where one roll ends and a new roll begins, simply T-off the lapped area. This is achieved by taking a 6 to 8 inch piece of tape and applying it over the lapped area. In draft stop areas where you have a butt joint intersecting a seam, simply apply a 6 to 8 inch piece of tape diagonally across the seam and butt where they intersect. We appreciate your assistance, in informing you customers of this updated information. If we can be of any further assistance, please don't hesitate to call us.

Ceilings

The Fire Tape is **NOT** rated for use on ceilings.

DIAGRAM A

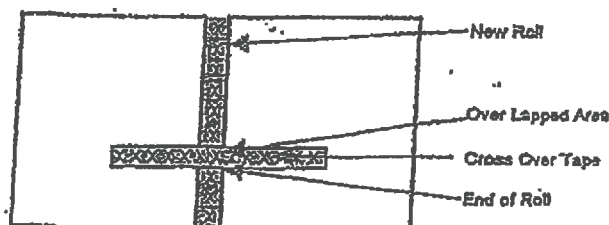
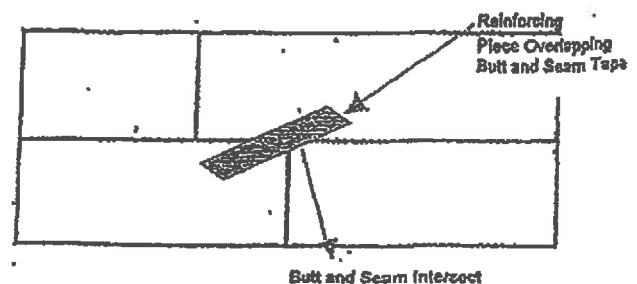


DIAGRAM B





Testing everywhere for markets anywhere.

Products and materials bearing Intertek's proprietary WH Mark indicate to your customers and end-users product compliance to relevant building codes, association criteria, and product safety or performance standards such as those published by UL and ANSI. Intertek is recognized by the Occupational Safety and Health Administration (OSHA) as a Nationally Recognized Testing Laboratory (NRTL) and accredited by the Standards Council of Canada as a Testing Organization and Certifying Body. These accreditations enable us to offer manufactures and distributors an alternative to working with organizations such as UL and CSA, and insure that products bearing our mark are accepted.

The WH Mark can be found on thousands of building and construction products, from hardware and hearth products to fenestration materials, manufactured wood, plumbing, roofing, and various other products.

The belief that manufacturers need to obtain a UL or CSA listing in order for their products to be sold in North America is truly an antiquated notion. As thousands of manufacturers have come to realize this more and more manufacturers are turning to Intertek and our marks. The ability to choose which safety certification agency can best meet their needs provides them with the ability to quicken time to market and increase revenue potential.

We welcome the opportunity to discuss this issue in more detail.



Intertek Testing Services NA, Inc.
1829 32nd Avenue, Lachine, Qc H8T 3J1
Telephone 514-631-3100 Fax 514-631-1133 Home Page www.intertek-etlsemko.com



ITS Intertek Testing Services
ETL SEMKO

May 6, 2002

Mr. Gary Swartz
E-Z Taping System Inc.
P.O. Box 11263
808 Packerland Drive
Green Bay, Wisconsin 54307-1263
Telephone: 800-721-8273
Facsimile: 866-248-8312

RE: E-Z FIRE TAPE

Dear Mr. Swartz:

This letter is in response to our telephone conversations and our e-mails. Intertek Testing Services has examined your test files and after conducting a review, found that the "Fire Tape" was tested to UBC 7-1-1994, ASTM 119, CAN/ULC S-101, NFPA 251, and UL 263.

Please feel free to contact us if you have any questions or comments.



Sincerely,

Timm J. Schaeffer
Engineer



May 6 letter-Gary Swartz-EZ Taping

emc



Intertek Testing Services NA, Inc.
PO Box 620735, 8431 Murphy Drive, Middleton, WI 53562
Telephone 608-836-4400 Fax 608-831-9279 Home Page www.etlsemko.com



Engineering Judgement Record

Applicant's Name: EZ Taping Systems

Project Number: 3024920

Product: Approval Tested Wall Assembly to CAN/ULC S101, NFPA 251, and UL 263

Cat. No.: _____

Applicable Standards: UBC Standard 7-1-1994, ASTM E119, CAN/ULC S-101, NFPA 251, and UL 263

Rating: 60 Minute Fire Wall Assemblies

Section or Clause: _____

Description of the Feature in question:

- Add Standard approvals to EZ Taping's Fire Tape® listings EZT/WA 60-01 and EZT/WA 60-02.

Rationale for the Engineering Judgement:

- UBC Standard 7-1-1994, ASTM E119, CAN/ULC S-101, NFPA 251, and UL 263 are similar. Any differences between these standards will not change the results stated in Test Report #13164-764-2 and #13164-764-3 (referencing UBC Standard 7-1-1994 and ASTM E119). Thus EZ Taping's Fire Tape® is eligible for listing under CAN/ULC S-101, NFPA 251, and UL 263 for both EZT/WA 60-01 and EZT/WA 60-02.

Engineer: 
James F. Tugeson

Reviewer: 
Nigel Stamp

Engineering Judgement (3024920) EZ Tape 03 May 2002



05/03/02





Intertek Testing Services

ETL SEMKO

Date: April 18, 2003

Client: EZ Taping System
P.O. Box 11263
Green Bay, Wisconsin 54307-1263
Telephone: 920-436-9800
Facsimile: 920-429-9413

Project: 3040054

Test Procedures: ASTM E 119, CAN/ULC-S101, NFPA 251, UBC 7-1-1994, UL 263

Request:

EZ Taping Systems requested authorization to extend their current listing of their "Fire Tape" drywall joint tape. Currently the "Fire Tape" is limited for use in 1 hour drywall wall assemblies. EZ Taping Systems is seeking authorization to be used in 2 hour drywall wall assemblies.

Engineering Review:

Currently EZ Taping Systems "Fire Tape" is eligible to be used over vertical joints in 1 hour drywall wall assemblies. These assemblies have one (1) layer of 5/8" Type 'X' gypsum wallboard panels on each side of the steel or wood studs.

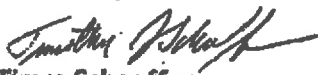
Two (2) hour rated walls have two (2) layers of 5/8" Type 'X' gypsum wallboard panels on each side of the steel or wood studs. The "Fire Tape" product would be used as an alternative to conventional joint tape in specific systems when:

1. Two or more layers of listed Type 'X' gypsum wallboard are applied vertically with joints staggered and the joints of the face boards are:
 - a. Tightly butted and taped with EZ Taping Systems' "Fire Tape" or
 - b. Finished with joint compound of EZ Taping Systems' "Fire Tape" if the gap between gypsum wallboard panels is visible at the joint.
2. Two or more layers of USG "Sheetrock" Firecode C gypsum wallboard are applied (horizontally or vertically).
 - a. The panels shall be tightly butted with the joints staggered and taped with EZ Taping Systems' "Fire Tape".
 - b. If a gap is visible at the joint, a finishing coat of joint compound over the EZ Taping Systems' "Fire Tape" would be required.

Conclusion:

It is deemed that the application of EZ Taping Systems' "Fire Tape" as described above would not affect the fire performance of a 2 hour drywall assembly with steel or wood studs.

Written by:


Timm Schaeffer
Engineer

Reviewed by:


Rick Curkeet
Chief Engineer - Building Products



Intertek Testing Services NA, Inc.

8431 Murphy Drive, Middleton, WI 53562

Telephone 608-838-4400 Fax 608-831-9279 Home Page www.etssemko.com

Warnock Hersey

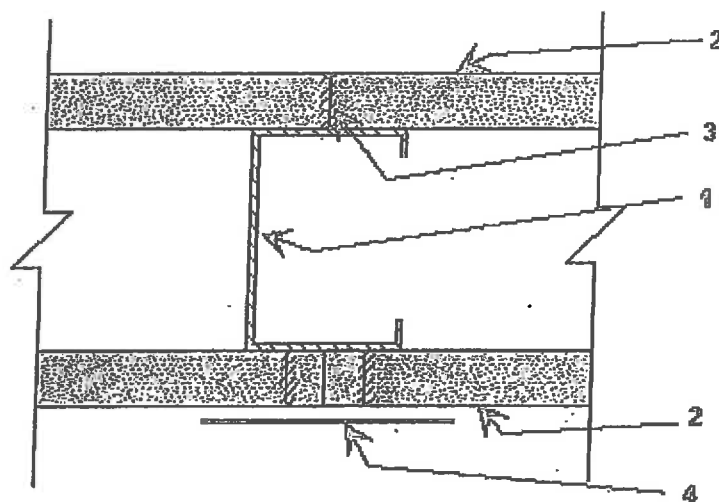


WALL ASSEMBLIES

EZ TAPING SYSTEM, INC. - Green Bay, WI USA

▽ DESIGN NO. EZT/WA 60-01

DESIGN NO. EZT/WA 60-01
ASSEMBLY RATING - 1 HOUR, NON-BEARING WALL



1. **Steel Studs:** 'C' shaped 3-5/8" minimum deep, fabricated from minimum 0.019" thick galvanized steel. Cut to length 1/2" less than the openings height and spaced 24" maximum oc.
2. **Gypsum Board:** 5/8" thick USG Sheetrock brand gypsum panels, "Firecode Core" (Type SCX), or Canadian Gypsum Co. 5/8" Type SCX Firecode Core; applied vertically. No horizontal joints allowed. All joints are staggered and tightly butted. If joints are not tightly butted, finishing coat of joint compound applied over EZ Taping System, Inc. "Fire Tape" is required.
3. **Attachment:** 1-1/8" long, Type S drywall screws, spaced 8" o.c. to vertical edges and 12" o.c. to top and bottom runners and intermediate studs.
4. **"Fire Tape":** Nominal 2" (48mm) wide EZ Taping System, Inc. Fire Tape applied on the vertical joints at stud.

*Component bearing the Warnock Hersey Certification Mark
 Testing Standards: CAN/ULC-S101, NFPA-251, UL-263.

▷ DESIGN NO. EZT/WA 60-02

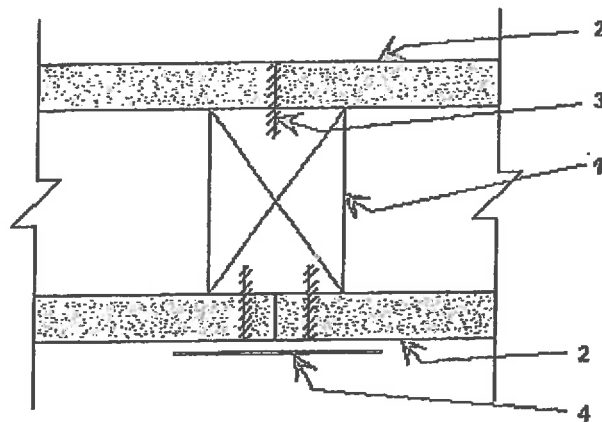
WALL ASSEMBLIES

EZ TAPING SYSTEM, INC. - Green Bay, WI USA

▷ DESIGN NO. EZT/WA 60-01

▽ DESIGN NO. EZT/WA 60-02

DESIGN NO. EZT/WA 60-02 ASSEMBLY RATING - 1 HOUR, BEARING WALL



1.	Studs: Nominal 2" x 4" wood studs, spaced maximum 16" o.c. with mid-height bridging.
2.	Gypsum Board: 5/8" thick USG Sheetrock brand gypsum panels, "Firecode Core" (Type SCX), or Canadian Gypsum Co. 5/8" Type SCX Firecode Core, applied vertically. No horizontal joints allowed. All joints are staggered and tightly butted. If joints are not tightly butted, finishing coat of joint compound applied over EZ Taping System, Inc. "Fire Tape" is required.
3.	Attachments: a) 1-1/4" long, Type W drywall screws, spaced 8" o.c. to vertical edges and 12" o.c. to top and bottom runners and intermediate studs. b) 1-7/8" long, 0.0915" Shank, 1/4" Head, nailed at 7" o.c.
4.	"Fire Tape": Nominal 2" (48mm) wide EZ Taping System, Inc. Fire Tape applied on the vertical joints at stud. Finishing coat of joint compound applied over EZ Taping System Inc. Fire Tape is required.

*Component bearing the Warnock Hersey Certification Mark
Testing Standards: CAN/ULC-S101, NFPA-251, UL-263.

▷ DESIGN NO. EZT/WA 120-01

▷ DESIGN NO. EZT/WA 120-02

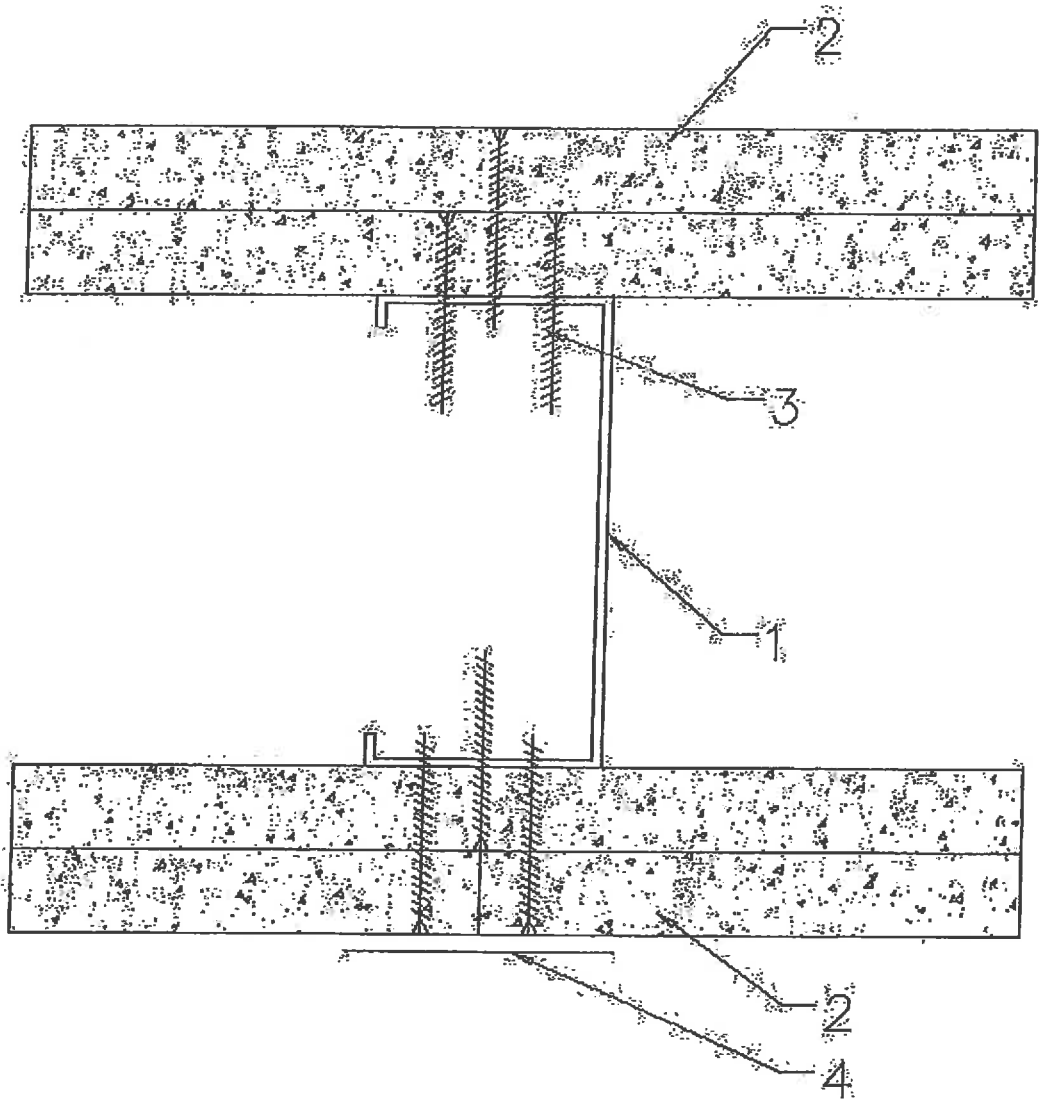
▷ Evaluated to the following...

WALL ASSEMBLIES

EZ TAPING SYSTEM, INC. - Green Bay, WI USA

- ▷ DESIGN NO. EZT/WA 60-01
- ▷ DESIGN NO. EZT/WA 60-02
- ▽ DESIGN NO. EZT/WA 120-01

**DESIGN NO. EZT/WA 120-01
ASSEMBLY RATING - 2 HOURS, NON-BEARING WALL**



- | | |
|----|---|
| 1. | Steel Studs: 'C' Shaped 3-5/8" minimum deep, fabricated from minimum 0.019" thick galvanized steel. Cut to length 1/2" less than the openings height and spaced 24" maximum oc. |
|----|---|

2.	<p>Gypsum Board: Two (2) hour rated walls have two (2) layers of 5/8" Type 'X' gypsum wallboard panels on each side of the steel studs. The "Fire Tape" product would be used as an alternative to conventional joint tape in specific systems when:</p> <ol style="list-style-type: none"> 1. Two or more layers of listed Type 'X' gypsum wallboard are applied vertically with joints staggered and the joints of the face boards are: <ol style="list-style-type: none"> a. Tightly butted and taped with EZ Taping Systems "Fire Tape" or b. Finished with joint compound of EZ Taping Systems "Fire Tape" if the gap between gypsum wallboard panels are visible at the joint. 2. Two or more layers of USG "Sheetrock" Firecode C gypsum wallboard are applied (horizontally or vertically). <ol style="list-style-type: none"> a. The panels shall be tightly butted with the joints staggered and taped with EZ Taping Systems "Fire Tape". b. If a gap is visible at the joint, a finishing coat of joint compound over the EZ Taping Systems "Fire Tape" would be required.
3.	<p>Attachment: 1-1/8" long, Type S drywall screws, spaced 8" oc to vertical edges and 12" oc to top and bottom runners and intermediate studs.</p>
4.	<p>"Fire Tape": Nominal 2" (48mm) wide EZ Taping System, Inc. Fire Tape applied on the vertical joints at studs.</p>

*Components bearing the Warnock Hersey Certification Mark.

Testing Standards: CAN/ULC-S101, NFPA-251, UL-263.

‣ DESIGN NO. EZT/WA 120-02

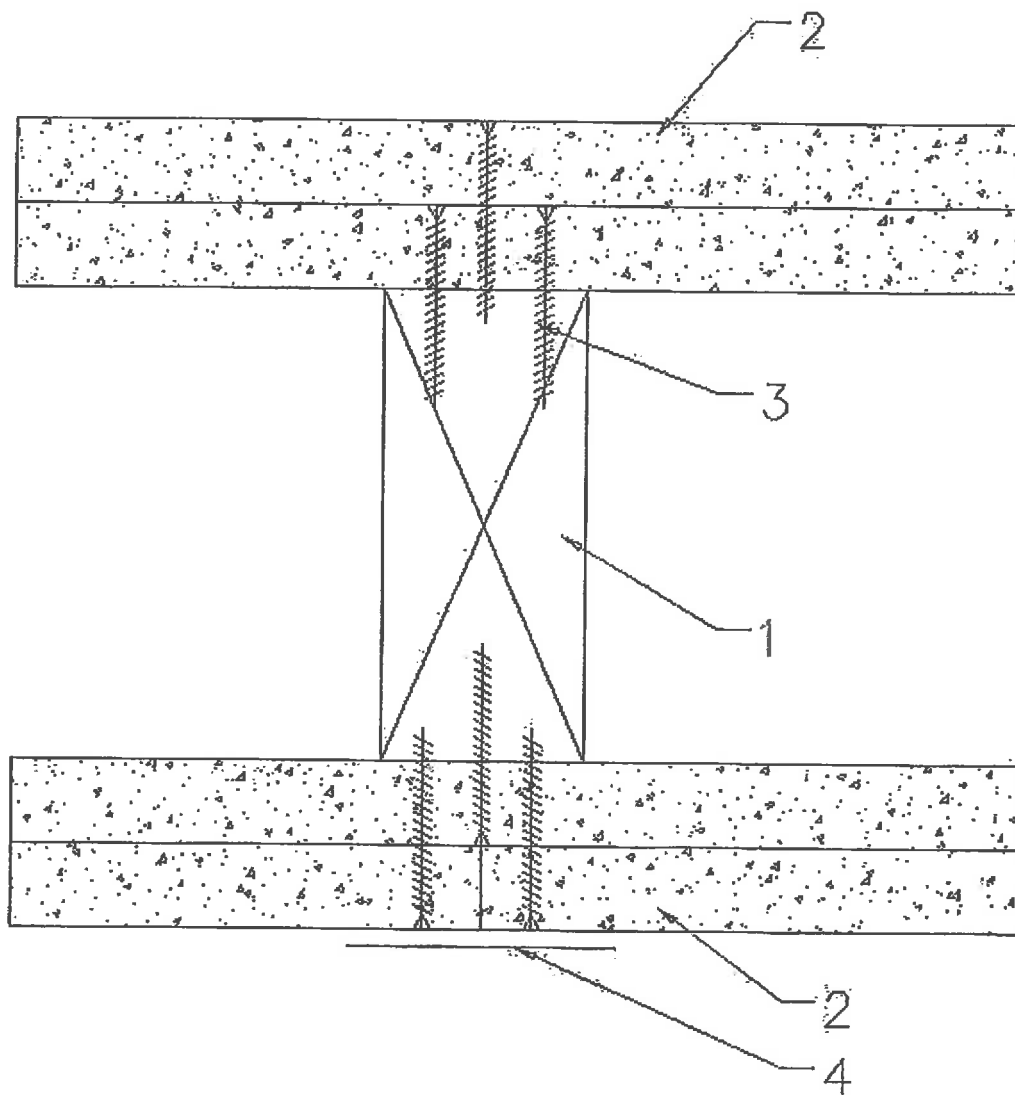
‣ Evaluated to the following...

WALL ASSEMBLIES

EZ TAPING SYSTEM, INC. - Green Bay, WI USA

- ▷ DESIGN NO. EZT/WA 60-01
- ▷ DESIGN NO. EZT/WA 60-02
- ▷ DESIGN NO. EZT/WA 120-01
- ▽ DESIGN NO. EZT/WA 120-02

**DESIGN NO. EZT/WA 120-02
ASSEMBLY RATING - 2 HOUR, BEARING WALL**



1.	Studs: Nominal 2" x 4" wood studs, spaced maximum 16" oc with mid-height bridging.
-----------	---

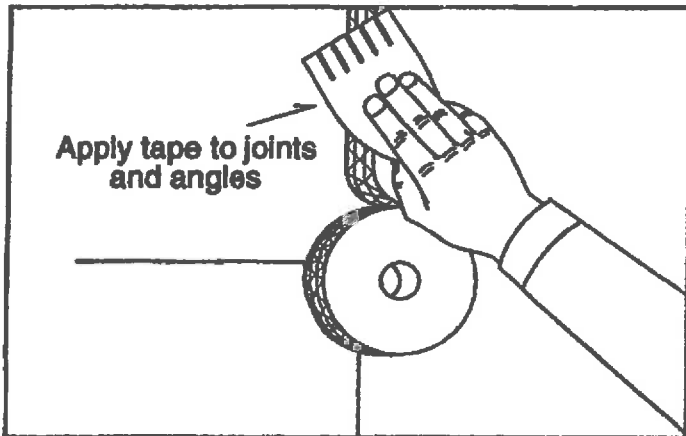
2.	<p>Gypsum Board: Two (2) hour rated walls have two (2) layers of 5/8" Type 'X' gypsum wallboard panels on each side of the steel studs. The "Fire Tape" product would be used as an alternative to conventional joint tape in specific systems when:</p> <p>3. Two or more layers of listed Type 'X' gypsum wallboard are applied vertically with joints staggered and the joints of the face boards are:</p> <p>a. Tightly butted and taped with EZ Taping Systems "Fire Tape" or</p> <p>b. Finished with joint compound of EZ Taping Systems "Fire Tape" if the gap between gypsum wallboard panels are visible at the joint.</p> <p>4. Two or more layers of USG "Sheetrock" Firecode C gypsum wallboard are applied (horizontally or vertically).</p> <p>a. The panels shall be tightly butted with the joints staggered and taped with EZ Taping Systems "Fire Tape".</p> <p>b. If a gap is visible at the joint, a finishing coat of joint compound over the EZ Taping Systems "Fire Tape" would be required.</p>
3.	<p>Attachment:</p> <p>a) 1-1/4" long, Type W drywall screws, spaced 8" oc to vertical edges and 12" oc to top and bottom runners and intermediate studs.</p> <p>b) 1-7/8" long, 0.0915" Shank, 1/4" Head, nailed at 7" oc.</p>
4.	<p>"Fire Tape": Nominal 2" (48mm) wide EZ Taping System, Inc. Fire Tape applied on the vertical joints at studs. Finishing coat of joint compound applied over EZ Taping System, Inc. Fire Tape is required.</p>

*Components bearing the Warnock Hersey Certification Mark.
 Testing Standards: CAN/ULC-S101, NFPA-251, UL-263.

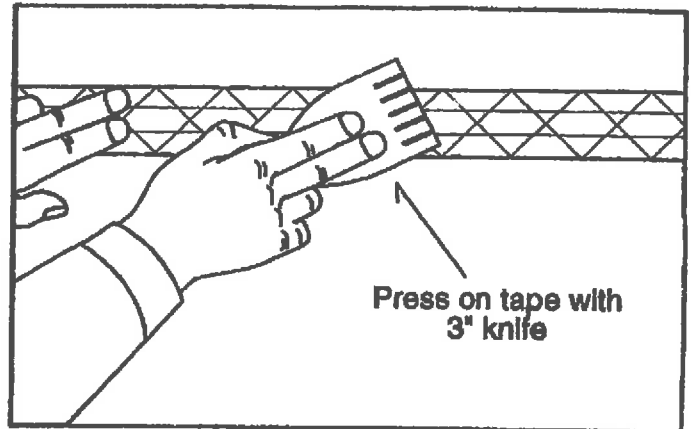
▷ Evaluated to the following...

E-Z Taping System® Fire Tape®

Mudless Drywall Tape Application Instructions



Apply Fire Tape to joints and angles of clean, dry, fire rated drywall products only. Be sure the pressure sensitive adhesive contacts the gypsum board at all times.



Apply sufficient pressure to the tape with the E-Z Tape 3" plastic knife to aggressively adhere the tape to the gypsum board. Usage of your hand or any other tool will not get sufficient adhesion of the Fire Tape to the gypsum board. Use a corner roller to adhere tape in the angles.

REQUIREMENTS AND NOTICES FOR USING FIRE TAPE®

1. EZ Taping System Fire Tape is for use on vertical or horizontal joints of interior, nonload-bearing, one-hour fire resistance-rated steel and wood framed assemblies under Section 2508.4 of the IBC, Section R321.1 of the IRC and Section 2511.5 of the UBC. It is not rated for ceilings. It is also rated for two hour fire rated vertically hung wall systems.
2. Fire Tape is designed to cover or bridge normal tight butted joints and angles (1/8"-1/4"). It is not to be used to cover wide joint gaps, large holes, or substitute in any way for fire rated gypsum board.
3. Fire Tape must be applied to clean and dry surfaces. Wipe off excessive dust from the gypsum board before applying.
4. Fire Tape can be applied on wood and steel fire resistive assemblies consistent with U 465 and GA 1200 constructions.
5. Fire Tape, approved gypsum board, and air temperature must be at or above 30 degrees Fahrenheit to achieve proper adhesion. Tape must be maintained at or above 55 degrees Fahrenheit prior to application.
6. The surface of the Fire Tape is treated with silicone and mud or paint will not adhere to it. If you need to disguise the color of the Fire Tape on exposed walls, we recommend using a primer called Zinsser, Bulls Eye Odorless to coat over it. Once the Zinsser is dry, a latex paint or mud can be applied.
7. Do not overlap the Fire Tape. The silicone on the surface of the tape will not allow it to adhere to itself.

Visit our website at www.eztapingsystem.com

FIRE TESTING AND COMPLIANCE INFORMATION

Reports of tests in accordance with ASTM E119, C474 and C475, and the ICC-ES Interim Criteria for Adhesively Attached Drywall Tape (AC119), dated July 1996 and UBC Standard 7-1. The test assembly was constructed according to both U 465 and GA 1200 design.

Rated for use by:
ICC Evaluation Services, Inc.
(ESR-1231)

The tests for 2 Hr. rating were conducted to meet UBC Standard 7-1-1994, ASTM E119, CAN/ULC-S101, NFPA 251, and UL 263 procedures.

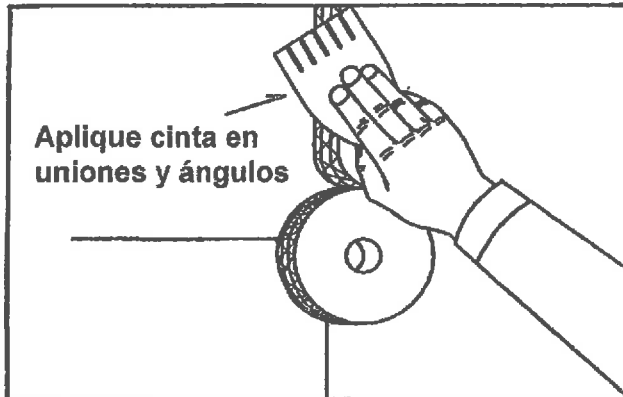
*Testing conducted by Intertek Testing Services, Warnock Hersey, Inc. 1995.

E-Z Taping System and Fire Tape are registered trademarks of E-Z Taping System, Inc.

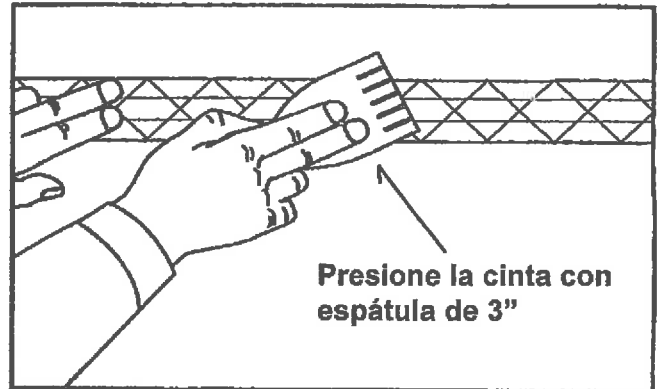
US patent No. 5,486,394, 5,687,523, & 6,226,946. Foreign Patents Pending.
E-Z Taping System, Inc. • P.O. Box 11263 • Green Bay, WI 54303 • 800-721-8273

E-Z TAPING SYSTEM® (SISTEMA DE CINTA E-Z) **Fire Tape® (Cinta FIRE)**

Instrucciones para aplicar la Cinta sin Compuesto para Paneles



Aplice la Fire Tape en uniones y ángulos sólo en productos de paneles de yeso limpios, secos, y clasificados como resistentes al fuego. Asegúrese de que el adhesivo sensible a la presión esté siempre en contacto con el panel.



Aplice suficiente presión a la cinta con una espátula plástica E – Z Tape de 3" para adherir firmemente la cinta al panel de yeso. El uso de su mano o de cualquier otro instrumento no logrará suficiente adhesión de la Fire Tape al panel de yeso. Use un rodillo de esquinas para adherir la cinta en los ángulos.

REQUISITOS E INFORMACION PARA USAR FIRE TAPE® (Cinta FIRE)

1. La cinta Fire Tape del Sistema de Cintas EZ es para ser usada en juntas interiores horizontales o verticales de conjuntos de estructura de madera o de acero clasificado como resistente al fuego por una hora, que no sostengan pesos, bajo la Sección 2508.4 de IBC, Sección R321.1 de IRC y Sección 2511.5 de UBC. No está certificada para techos. También está certificada para sistemas de paredes verticales sostenidas, hechos de materiales certificados que resisten al fuego por dos horas.
2. Fire Tape está diseñada para cubrir o conectar uniones y ángulos empalmados (1/8"-1/4"). No debe usarse para cubrir bordes separados, huecos grandes, y nunca como sustituto de paneles resistentes al fuego.
3. Fire Tape debe aplicarse en superficies limpias y secas. Retire el exceso de polvo del panel de yeso antes de aplicar.
4. Fire Tape puede aplicarse en ensamblajes de madera o acero resistentes al fuego que cumplan las normas de construcciones U 465 y GA 1200.
5. Fire Tape, el panel de yeso aprobado, y la temperatura ambiente deben estar al menos a 30 grados Fahrenheit (12,7 C) para lograr la adhesión correcta. La Cinta debe ser mantenida al menos a 55 grados Fahrenheit antes de aplicarse.
6. La superficie de Fire Tape está tratada con siliconas y el compuesto o la pintura no se adherirá a ella. Si necesita cambiar el color de Fire Tape en paredes expuestas, recomendamos usar un imprimador llamado Zinsser, Bulls Eye Odorless, para pintar sobre ella. Una vez que Zinsser seca, se puede aplicar una pintura al látex o compuesto.
7. No encime la Fire Tape. La silicona en la superficie de la cinta no permitirá que se adhiera a sí misma.

www.eztapingsystem.com

INFORMACION SOBRE PRUEBAS CONTRA FUEGO Y CUMPLIMIENTO DE NORMAS

Informes de pruebas de acuerdo a ASTM E119, C474 y C475, y el ICC-ES Interim Criteria for Adhesively Attached Drywall Tape (AC119), de Julio de 1996 y el UBC Standard 7-1. El conjunto de pruebas fue construido de acuerdo a los diseños U 465 y GA 1200.

Calificado para uso por:
ICC Evaluation Services, Inc.
(ESR-1231)

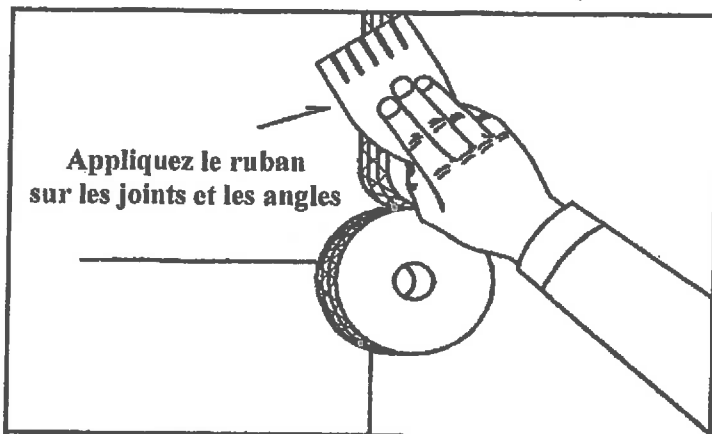
Las pruebas para resultados de 2 Hr. fueron hechas de acuerdo a los estándares UBC Standard 7-1-1994, ASTM E119, CAN/ULC-S101, NFPA 251, y procedimientos UL 263.

*Pruebas llevadas a cabo por Intertek Testing Services, Warnock Hersey, Inc. 1995.

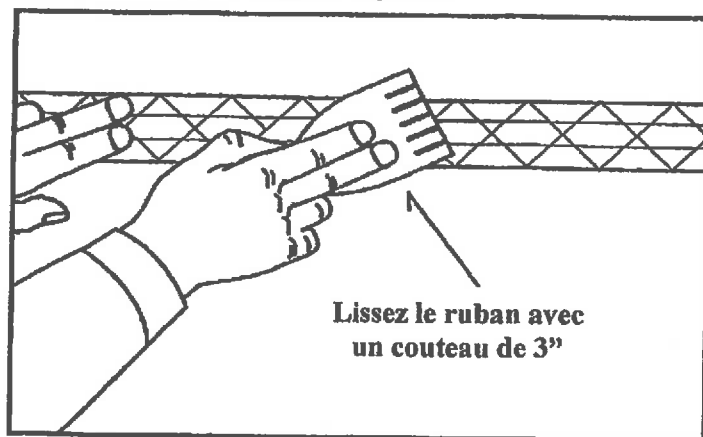
E-Z Taping System y Fire Tape son marcas registradas de E-Z Taping System, Inc.

Ruban pare-feu® d'E-Z Taping System®

Instructions pour l'application du ruban à joints sans composé à joints



Appliquez le ruban pare-feu seulement sur les joints et les angles des panneaux de gypse propres, secs et résistants au feu. Assurez-vous que l'adhésif autocollant est toujours en contact avec le panneau.



À l'aide d'un couteau en plastique E-Z Taping de 3", lissez fermement le ruban afin qu'il adhère bien au gypse. L'utilisation d'un autre outil ou des mains ne suffit pas pour bien faire adhérer le ruban. Utilisez un rouleau d'angle pour bien faire adhérer le ruban dans les angles.

REMARQUES CONCERNANT L'UTILISATION DU RUBAN PARE-FEU

1. Le ruban pare-feu d'E-Z Taping System doit être utilisé sur les joints horizontaux ou verticaux des constructions intérieures non porteuses avec cloisons à montants de bois et d'acier ayant un indice de résistance au feu d'une heure, en conformité avec la section 2508.4 de l'IBC, la section R321.1 de l'IRC et la section 2511.5 de l'UBC. Il convient aussi aux systèmes muraux verticaux suspendus ayant un indice de résistance au feu de deux heures, mais pas aux plafonds.
2. Le ruban pare-feu est conçu pour couvrir ou boucher les joints d'about et les angles serrés ordinaires (1/8" à 1/4"). Il ne doit pas être utilisé pour couvrir des joints très espacés ni de gros trous ou comme substitut au gypse résistant au feu.
3. Le ruban pare-feu doit être appliqué sur une surface propre et sèche. Enlevez l'excès de poussière sur le panneau de gypse avant l'application.
4. Le ruban pare-feu peut être appliqué sur les constructions avec cloisons à montants de bois et d'acier résistantes au feu, en conformité avec les normes U 465 et GA 1200.
5. Pour une adhérence maximale, la température du ruban pare-feu, des panneaux de gypse approuvés et de l'air ambiant doit être d'au moins 30 degrés Fahrenheit (-1 °Celsius). Le ruban doit être conservé à une température d'au moins 55 degrés Fahrenheit (12,8 °Celsius) avant l'application.
6. Puisque la surface du ruban pare-feu a été traitée avec de la silicone, le composé à joints et la peinture n'y adhéreront pas. Si vous souhaitez masquer la couleur du ruban pare-feu sur un mur visible, nous vous conseillons d'utiliser l'apprêt «Bulls Eye» inodore de Zinsser. Lorsqu'il sera sec, vous pourrez le recouvrir de peinture au latex ou de composé à joints.
7. Évitez que deux rubans se chevauchent; la silicone dont ils sont enduits les empêcherait d'adhérer l'un à l'autre.

RENSEIGNEMENTS CONCERNANT LA CONFORMITÉ ET LES ESSAIS DE RÉSISTANCE AU FEU

Rapports d'essais exécutés en conformité avec les normes ASTM E119, C474 et C475, les Interim Criteria for Adhesively Attached Drywall Tape (AC119) de l'ICC-ES (juillet 1996), et la norme UBC 7-1. L'ensemble de mesure a été préparé en conformité avec les normes U 465 et GA 1200.

Homologué par :
ICC Evaluation Services, Inc.
(ESR-1231)

Les essais d'homologation de résistance au feu de deux heures ont été effectués en conformité avec les normes UBC 7-1-1994, ASTM E119, CAN/ULC-S101, NFPA 251 et UL 263.

*Essais réalisés par Intertek Testing Services, Warnock Hersey, Inc. 1995.

E-Z Taping System® et Ruban pare-feu® sont des marques de commerce déposées d'E-Z Taping System, Inc.

N°s de brevets américains : 5.486.394, 5.687.523 et 6.226.946. Brevets étrangers en instance.
E-Z Taping System, Inc. C.P. 11263, Green Bay, WI 54303 800-721-8273

Material Safety Data Sheet



May be used to comply with
OSHA's Hazard Communication Standard,

Occupational Safety and Health
Administration
(Non-Mandatory Form)

IDENTITY (As Used on Label and List) WALLBOARD JOINT TAPE	Note: Blank spaces are not permitted. If any item is not applicable, or no information is available, the space must be marked to indicate that.
--	---

Section I

Manufacturer's Name E-Z TAPING SYSTEM, INC.	Emergency Telephone Number 920-429-9274
Address (Number, Street, City, State, and ZIP Code) 808 PACKERLAND DRIVE GREEN BAY, WI 54303	Telephone Number for Information 920-429-9274
	Date Prepared February 19, 2009

Section II - Hazard Ingredients/Identity Information

Hazardous Components (Specific Chemical Identity; Common Name(s))	OSHA PBL	ACGIH TLV	Other Limits Recommended	% (optional)
N / A				

Section III - Physical/Chemical Characteristics

Boiling Point	212 °F	Specific Gravity (H ₂ O = 1)	1.0-1.2
Vapor Pressure (mm Hg.)	17MM EG	Melting Point	46-48%
Vapor Density (AIR = 1) LESS THAN 1		Evaporation Rate (Butyl Acetate = 1) LESS THAN 1	
Solubility in Water DILUTABLE			
Appearance and Odor MILKY WHITE AMMONIA			

Section IV - Fire and Explosion Hazard Data

Flash Point (Method Used) NON-COMBUTIBLE	Flammable Limits	LEL	UBL
Extinguishing Media FOAM FOG, CO2, WATER, OR DRY CHEMICALS			

Special Fire Fighting Procedures	N / A
Unusual Fire and Explosion Hazards	ADHESIVE CAN SPLATTER

Section V - Reactivity Data

Stability	Unstable		Conditions to Avoid AVOID TEMP ABOVE 350° F
	Stable	X	ONSET OF POLYMER DECOMPOSITION
Hazardous Decomposition or Byproducts TERMINAL DECOMPOSITION MAY YIELD ACRYLIC MONOMER			
Hazardous Polymerization	May Occur		Conditions to Avoid
	Will Not Occur	X	

Section VI - Health Hazard Data

WASH WITH SOAP AND WATER IF NECESSARY

Section VII - Precautions for Safe Handling and Use

Steps to Be Taken in Case Material is Released or Spilled	N / A
Waste Disposal Method	SOLID WASTE LAND FILL OR INCINERATOR

Section VIII - Control Measures

Respiratory Protection (<i>Specify Type</i>)		
NOT NEEDED UNDER NORMAL CONDITONS		
Ventilation	Local Exhaust	Special
N / A		
Protective Gloves	Eye Protection	
USE GLOVES IF NECESSARY	NONE REQUIRED	